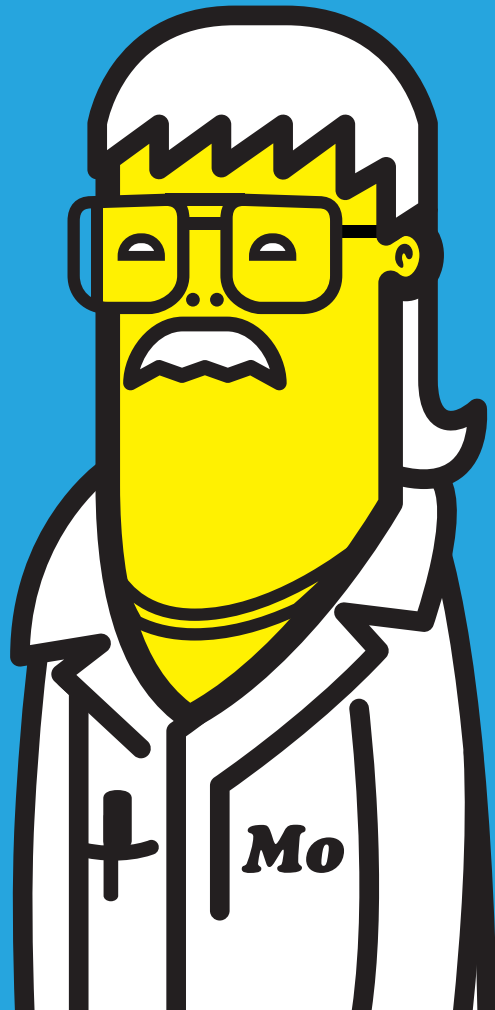
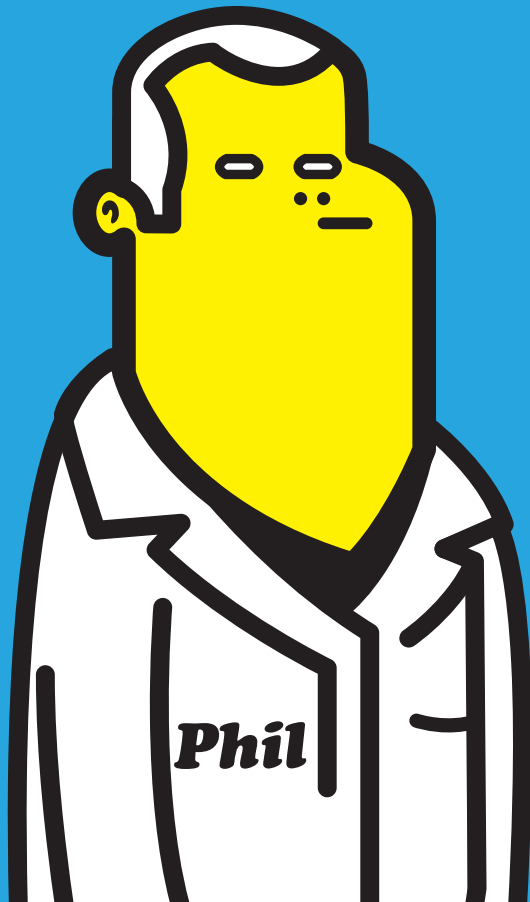


I BOWLED A TOURNAMENT DRESSED AS ELVIS ONCE.

WOW. THAT'S  
**RADICAL**  
BOWLING TECHNOLOGIES®



# REAX PEARL

TOP SHELF

## SPECS

**BALL NAME** Reax™ Pearl  
**PART NUMBER** 60-105565-93X  
**COLOR** Black/Red/Yellow Pearl  
**CORE** Asymmetric Core with Offset Technology  
**RG MIN** 2.49  
**RG DIFF** 0.054  
**RG ASYM** 0.013  
**FINISH** 500, 4000 Siaair Micro Pad



## CORE



## RG CHART

	16LB	15LB	14LB
<b>RG</b>	2.482	2.492	2.509
<b>DIFFERENTIAL</b>	0.054	0.054	0.054
<b>INTERMEDIATE DIFF</b>	0.013	0.013	0.013

## PERFORMANCE

The Reax Pearl is our newest addition to the Top Shelf performance level. It is the perfect compliment to the Reax solid. The Reax Pearl features the same dynamic core as in the solid but is now encapsulated in a newly formulated pearlized cover. This combination of core and cover creates a greater angle of entry than the original Reax, more angle means more strikes. Don't be left behind ....Reax

SNEEZES TRAVEL AT 100 MPH.



# REAX

## TOP SHELF

### SPECS

**BALL NAME** Reax™  
**PART NUMBER** 60-105515-93X  
**COLOR** Black Solid  
**CORE** Asymmetric Core with Offset Technology  
**RG MIN** 2.49  
**RG DIFF** 0.054  
**RG ASYM** 0.013  
**FINISH** 500, 1500 Siaair Micro Pad



### CORE



### RG CHART

	16LB	15LB	14LB
<b>RG</b>	2.482	2.492	2.509
<b>DIFFERENTIAL</b>	0.054	0.054	0.054
<b>INTERMEDIATE DIFF</b>	0.013	0.013	0.013

### PERFORMANCE

The Black Reax solid is truly a heavy oil performance ball. The Reax features the patented offset core technology. Combining the core and cover with the comprehensive drilling instructions, the Reax is the total package. Don't be left behind....Reax

WOW. THAT'S RADICAL.



# YETI

## RELIABLE

### SPECS

**BALL NAME** Yeti™

**PART NUMBER** 60-105513-93X

**COLOR** Red/Purple Pearl

**CORE** Symmetric Core

**RG MIN** 2.482

**RG DIFF** 0.054

**RG ASYM** -

**FINISH** 500, 1000 Siaair Micro Pad, Rough Buff



### CORE



### RG CHART

	16LB	15LB	14LB	13LB	12LB
<b>RG</b>	2.471	2.482	2.498	2.585	2.608
<b>DIFFERENTIAL</b>	0.054	0.054	0.054	0.040	0.040

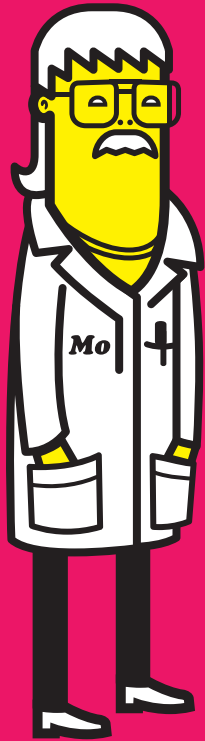
### PERFORMANCE

The Yeti features a newly patented symmetric core design that provides some significantly different performance options. The Yeti is one of the most technically advanced symmetric cores ever designed. The versatility and performance are the most notable characteristics. By matching this core technology with an outstanding cover stock formulation, the Yeti is able to provide outstanding all-purpose ball motion ideal for a wide variety of bowling styles on a wide variety of lane conditions.

A YETI CAN BOWL A 300 ANY DAY.



YETIS  
BELIEVE  
IN ME.



WOW. THAT'S  
**RADICAL**  
BOWLING TECHNOLOGIES®



# TORRID AFFAIR

EZ-USE

## SPECS

**BALL NAME** Torrid™ Affair

**PART NUMBER** 60-105567-93X

**COLOR** Dark Red/Light Red Solid

**CORE** Low RG Symmetric Core

**RG MIN** 2.48

**RG DIFF** 0.047

**RG ASYM** -

**FINISH** 500, 1000, 2000 Siaair Micro Pad,  
High Gloss



## CORE



## RG CHART

	16LB	15LB	14LB	13LB	12LB
<b>RG</b>	2.460	2.480	2.500	2.585	2.608
<b>DIFFERENTIAL</b>	0.047	0.047	0.045	0.040	0.040

## PERFORMANCE

The Torrid Affair is the newest addition to the EZ-Use level. Employing the same powerful core that is in the Torrid Elite, the Torrid Affair has all the attributes of a high performance ball except for the price. It's length and strong recovery offer a very desired reaction on nearly all league patterns, as well as lighter oil conditions. Turn up the heat on the competition.

IT'S HOT IN HERE.



# TORRID

# ELITE

## EZ-USE

EZ-USE SPECS

### SPECS

**BALL NAME** Torrid™ Elite

**PART NUMBER** 60-105511-93X

**COLOR** Purple/Blue/Gold Pearl

**CORE** Low RG Symmetric Core

**RG MIN** 2.48

**RG DIFF** 0.047

**RG ASYM** -

**FINISH** 500 Siaair Micro Pad, Rough Buff



### CORE

### RG CHART



**RG**  
**DIFFERENTIAL**

	16LB	15LB	14LB	13LB	12LB
<b>RG</b>	2.460	2.480	2.500	2.585	2.608
<b>DIFFERENTIAL</b>	0.047	0.047	0.045	0.040	0.040

### PERFORMANCE

The Torrid Elite will certainly catch your eye! It not only offers a great value with it's performance for the price, but has an outstanding color combination. It is the perfect combination of performance, value and aesthetics. The Torrid Elite has a symmetrical core with a medium aggressive cover in order to perform on medium to lighter oiled patterns.

RADICAL

I'M ON FIRE.



# ONCE UPON A TIME, IN A LAB FAR AWAY, RADICAL BOWLING TECHNOLOGIES —THE BRAIN-CHILD OF TWO RADICAL DUDES—WAS BORN.

**WELL, THAT'S NOT REALLY WHAT HAPPENED, HERE'S THE SCOOP.** Over a few frames and a discussion of the laws of physics and changing lane conditions, Phil Cardinale and Mo Pinel decided that today's league bowlers deserve better, and the idea for Radical happened. Just like that. The lab work came much later. What we really wanted to produce was a ball for us bowling geeks, physicists and performance junkies. We wanted the most scientifically advanced bowling products on the market. Being the radical dudes that we are, we made it happen, and it all started with the introduction of the REAX and Yeti in February 2013.

Since then, we have been working on ways to use our patents and knowledge to change the game of bowling with improved coverstocks, core technologies, and advanced layout techniques all in the name of advancing the performance of a bowling ball.

We are bowling junkies just like you so when you are not researching your next bowling ball or spending time on the lanes or in the pro shop, hit us up on Facebook or visit our website for the latest radical news. Bowling is our life, and that is how we roll.

[radicalbowling.com](http://radicalbowling.com)

