



Available at Pro Shops Worldwide  
1-888-8Dexter



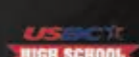
# Dexter®

The #1 Bowling Shoe in the World!


## 2013/2014 PRODUCT CATALOG



We are Proud to Sponsor the Following Organizations



## SHOE FEATURES

	SST8	SST8SE	SST Tank	SST6LZ	SST 1
Soft Full-Grain Leather Upper	X	X	X	X	X
Ballistic Nylon Upper for Ultimate Durability			X	X	
 Exclusive interchangeable (Left/Right) sole construction	X	X			
Right Hand & Left Hand Specific			X	X	X
Right Hand Specific Only					
Wide Width Available	X	X	X	X	X
Removable Blown EVA Footbed	X	X	X	X	
Removable Molded EVA Footbed					X
Goodyear® non-marking replaceable rubber push-off sole	X	X			
Fixed Goodyear® PowerPivot™ non-marking rubber push-off sole w/Duratip™ traction toe			X	X	X
Leather Toe Protector	X	X			
Removable S8 slide sole and H5 ST heel included on slide shoe	X	X	X	X	
Fixed S8 slide sole and H5 standard heel included on slide shoe					X
Removable T3 traction sole and H2 UB heel on push-off shoe	X	X			
Soles included: S6, S10	X		X		
Heels included: H7	X		X		
Heels included: H2 UB, H7				X	
Shoe Protector Included	X		X	X	

## SST TECHNOLOGY



### RIGHT/LEFT CONVERTIBLE

Exclusively with our SST 8. This feature allows for left handed and right handed bowlers to easily switch traction feet and customize their traction and heel height options.



### SE / LZ

Performance SE / LZ series shoes are made using high quality natural and full-grain leathers, which are soft and supple yet maintain their sporty good looks game after game. The SST 6 LZ features an extended base width on the outer side of the slide shoe to provide a more stable slide surface.



### TANK SST TANK

The exclusive SST Tank technology is built with Goodyear® high abrasion rubber stitched to the upper to provide long-lasting durability to support the most aggressive bowlers. It offers a customized *Tank Tread Heel Zone* and *Aero-Grip Sole* for a tougher and superior grip on the lanes. It also features a unique *Power-Pivot* zone to maximize push-off on the lanes. The SST Tank has a distinctive Steve last that provides a close fitting round toe for a secure fit.

## SST FIT GUIDE

Men's & women's performance lasts. Find the fit that's right for you.

### WOMEN'S

#### SST 8 Last: SÖFFT

The women's SST8 (Söfft) last is a modern last with wide spaded ball and elongated toe.

#### SST Last: ALI

The women's SST (Ali) last is a traditional athletic last with close fitting round toe.



### MEN'S

#### SST 8 Last: RÜHNE

The men's SST8 (Rühne) last is a modern last with wide spaded ball and elongated toe.

#### SST 8 SE Last: DOMINATOR

The men's SST8 (Dominator) is a competitive bowling last with straight shank and broadly rounded forefoot shape.

#### SST 6 Last: ESCAPE

The men's SST6 (Escape) last is an ergonomic last with wide oblique toe.

#### SST1 & 5 Lasts: STEVE

The men's SST Tank/SST1 (Steve) last is a traditional athletic last with close fitting round toe.



## SST REPLACEMENT SLIDE SOLES (\*Slide sole colors may change)

All individually packaged soles are sold oversized and can be trimmed to fit all men's and women's sizes. Available at pro shops worldwide.

**SIZING: One Size:** Trim to fit.



## SST REPLACEMENT TRACTION SOLES

All individually packaged soles are sold oversized and can be trimmed to fit all men's and women's sizes. Available at pro shops worldwide.

**SIZING: Small:** Women's 5 - 12 & Men's 6 1/2 - 8 1/2, **Large:** Men's 9 - 15, **One Size:** Trim to Fit



## SST REPLACEMENT HEELS

Individually packaged. Available at pro shops worldwide. All heels must be trimmed to fit.

**SIZING: Small:** Women's 5 - 12, **Medium:** Men's 6 1/2 - 9 (Tri-Dex & Saw Tooth), **Large:** Men's 9 1/2 - 15, **One Size:** Trim to Fit



## INTERCHANGEABLE SOLES & HEELS SETUP GUIDE

Use the SST Sole/Heel chart to gauge which combinations will give you optimal sliding and braking for your style of delivery.

SLIDE SOLE/HEEL GUIDE (For Slide Shoe Only)												TRACTION SOLE/HEEL GUIDE (For Traction Shoe Only)								
SST SOLES	S2	S3	S4	S5	S6	S7	S8	S9	S10	S11	S12	SST SOLES	T2	T2+	T3	T3+	T4	T5		
SST HEELS	SLIDE TRANSITION: SLIDE: SHORT BRAKE: MOST			SLIDE TRANSITION: SLIDE: AVERAGE BRAKE: MORE			SLIDE TRANSITION: SLIDE: LONG BRAKE: AVERAGE						TRACTION: MOST		TRACTION: STANDARD		TRACTION: LESS		TRACTION: LEAST	
H1	APPROACH CONDITIONS: SLICK			APPROACH CONDITIONS: NORMAL			APPROACH CONDITIONS: TACKY						APPROACH CONDITIONS: SLICK		APPROACH CONDITIONS: NORMAL		APPROACH CONDITIONS: NORMAL/TACKY		APPROACH CONDITIONS: TACKIEST	
H2	SLICK			NORMAL			TACKY						SLICK		NORMAL		NORMAL/TACKY		TACKIEST	
H2	SLICK			NORMAL			TACKY						SLICK		NORMAL		NORMAL/TACKY		TACKIEST	
H5	SLICK			NORMAL			TACKY						SLICK		NORMAL		NORMAL/TACKY		TACKIEST	
H5 ST	SLICK			NORMAL			TACKY						SLICK		NORMAL		NORMAL/TACKY		TACKIEST	
H5	SLICK			NORMAL			TACKY						SLICK		NORMAL		NORMAL/TACKY		TACKIEST	
H5 ST	SLICK			NORMAL			TACKY						SLICK		NORMAL		NORMAL/TACKY		TACKIEST	
H6	SLICK			NORMAL			TACKY						SLICK		NORMAL		NORMAL/TACKY		TACKIEST	
H6	SLICK			NORMAL			TACKY						SLICK		NORMAL		NORMAL/TACKY		TACKIEST	
H7	SLICK			NORMAL			TACKY						SLICK		NORMAL		NORMAL/TACKY		TACKIEST	
H7	SLICK			NORMAL			TACKY						SLICK		NORMAL		NORMAL/TACKY		TACKIEST	

## SOLES & HEELS TIPS

### Shoe Care Recommendations

- Inspect soles and heels for dirt or contamination.
- Always use shoe protectors when off the approach.
- Soles and heels should be replaced as soon as possible if there is any indication that they are not securely attaching onto the shoes.
- Inspect soles and heels for excessive wear and replace when necessary.
- Shoes should be stored in a cool, dry, and well ventilated area as trapped moisture and extreme heat or cold can cause damage.

### Use a Lower Heel Number Than Sole Number

Because you brake with your heel, use a heel with more friction (a lower number) than the sole. An exception would be if you bowl best with a heel that has the same number as the sole. Using a higher heel number than sole number is possible but not recommended for general approach conditions.

### Custom Traction Heel Height



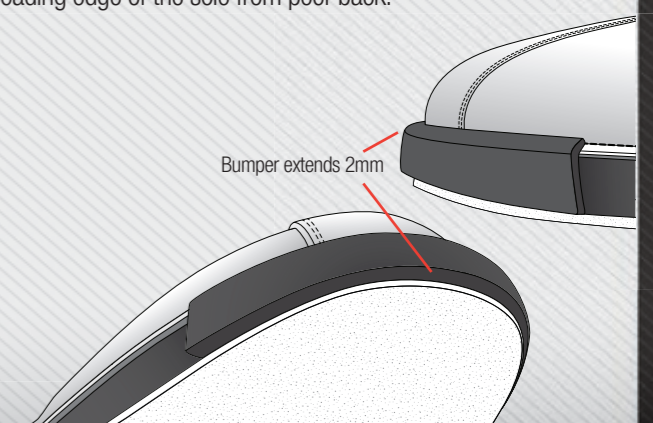
Exclusively with the NEW Dexter SST 8's you can now customize your traction shoe heel height by interchanging heels to correspond exactly to the height of your slide foot.

### Break In Your Soles & Heels

When changing either the soles or heels of your SST shoes Dexter recommends that you use caution when trying the new combination for the first time. Taking several practice slides on the approach without holding a ball will allow the bowler to predict how the reconfigured shoes will slide on the current approach conditions before throwing the next ball.

### Avoid Replacement Sole Peel-Back

When attaching a sole to the SST's make sure that the sole's leading edge is first aligned with the front of the Velcro® area ONLY. Note that on the SST8 the leather toe bumper will extend another 2mm in front of the sole bottom thereby protecting the leading edge of the sole from peel-back.





- 1. **BILL O'NEILL** | 2012 PABCON Championship Gold Medalist
- 2. **CHRIS BARNES** | PBA Triple Crown Winner
- 3. **WALTER RAY WILLIAMS JR.** | Seven-Time PBA Player of the Year
- 4. **MIKA KOIVUNIEMI** | Holds Titles in 20 Countries
- 5. **CAROLYN DORIN-BALLARD** | USBC Hall of Famer
- 6. **WES MALOTT** | Holds 15 Regional PBA Tour Titles
- 7. **JASON BELMOTE** | 2012-2013 USBC Masters Champion
- 8. **JASON COUCH** | Newest inductee to USBC Hall of Fame
- 9. **MIKE FAGAN** | 2011-2012 USBC Masters Champion

Team  
**Dexter**



**MEN'S**  
PERFORMANCE & ATHLETIC

**SST 8**

Black Full-Grain Leather w/ Red Trim

- Unique Total Interchangeable Sole Construction
- Right or Left Hand Convertible
- "Rühne" last with sleek silhouette for a more comfortable & stable fit at the widest part of your foot
- Goodyear® Replaceable Rubber Traction Soles
- 2 Shoe Protectors Included & 1 Satin Parts Bag
- On Shoe (Removable): S8, H5 ST, T3, H2 UB.
- In Box: S6, S10, H7

**B1899-17** Right/Left Hand M(D) 6.5 - 12/13/14/15  
Right/Left Hand WW(E) 6.5 - 12/13/14



**PRO'S CHOICE WALTER RAY WILLIAMS, JR.**

"This shoe offers tremendous performance features, and the styling is great. The new traction sole options allow me to adapt to any lane condition! I love this shoe!"



**SST 8**

White & Black Full-Grain Leather w/ Gold Trim

- Unique Total Interchangeable Sole Construction
- Right or Left Hand Convertible
- "Rühne" last with sleek silhouette for a more comfortable & stable fit at the widest part of your foot
- Goodyear® Replaceable Rubber Traction Soles
- 2 Shoe Protectors Included & 1 Satin Parts Bag
- On Shoe (Removable): S8, H5 ST, T3, H2 UB.
- In Box: S6, S10, H7

**B1899-94** Right/Left Hand M(D) 6.5 - 12/13/14/15



**PRO'S CHOICE MIKA KOIVUNIEMI**

"This shoe helped me win the Tournament of Champions and \$250,000.00 in first place prize money!"



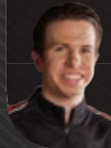
**SST TANK**

Black Full-Grain Leather & Ballistic Nylon w/ Olive Trim

- Stitched Toe Cement Construction
- Blucher Upper Pattern
- Goodyear® High Abrasion Rubber Stitched to the Upper of Push-Off Sole for Lasting Durability
- Power-Pivot Zone to maximize push-off
- 2 Shoe Protectors Included & 1 Satin Parts Bag
- On Shoe (Removable): S8, H5 ST
- In Box: S6, S10, H7

**B1788-1** Right Hand M(D) 6.5 - 12/13/14/15  
Right Hand WW(E) 6.5 - 12/13

**B1788-1 LH** Left Hand M(D) 6.5 - 12/13/14



**PRO'S CHOICE MIKE FAGAN**

"I've never worn a shoe with this combination of durability, flexibility and superior grip – until now. The Tank is a real triple threat."





LZ



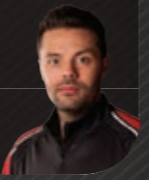
**SST 6 LZ**  
 Black Full-Grain Leather & Ballistic Nylon w/ Stone Trim

- Stitch-Down Construction
- Blucher Upper Pattern for Adjustable Fit
- "Escape" Last
- Fixed Goodyear® Push-Off Sole
- 1 Shoe Protector Included
- On Shoe (Removable): S8, H5 ST  
 In Box: S6, H7 (in polybag)

<b>B1902-1</b>	Right Hand	M(D)	6.5 - 12/13/14/15
	Right Hand	WW(E)	6.5 - 12/13
<b>B1902-1 LH</b>	Left Hand	M(D)	6.5 - 12/13

**PRO'S CHOICE JASON BELMONTE**

"I like the classic European design of the new SST 6 LZ. I need a wide base on the slide shoe for a little extra balance on my release."



NEW

SE



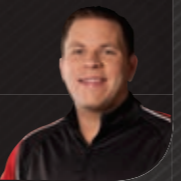
**SST 8 SE**  
 Black Full-Grain Leather w Blue & Silver Trim

- Unique Total Interchangeable Sole Construction
- Right or Left Hand Convertible
- Goodyear® Replaceable Rubber Traction Soles
- Leather Tow Drag Protector Stops Slide Sole Peel Back
- Stitch-Down Construction
- On Shoe (Removable): H5 ST, H2 UB, S8, T3

<b>B1900-18</b>	Right/Left Hand	M(D)	6.5 - 12/13/14/15
	Right/Left Hand	WW(E)	6.5 - 12/13/14

**PRO'S CHOICE BILL O'NEILL**

"When it comes to highly responsive performance and agility, there's nothing like the new SST 8 for a superior edge."



**SST 1**  
 Black or White Soft Full-Grain Leather

- Stitch-Down Construction
- Blucher Upper Pattern for Adjustable Fit
- Removable Supportive Contoured EVA Footbed
- EVA Midsole for Stability and Cushioned Support
- Goodyear® PowerPivot™ Non-Marking Push-Off Sole w/ Duratip™ Traction Toe
- On Shoe (Fixed): S8 & H5 Standard

<b>Black B801-1</b>	Right Hand	M(D)	8 - 12/13/14/15
<b>White B801-9</b>	Right Hand	M(D)	8 - 12/13/14/15
<b>White B801-9</b>	Right Hand	WW(E)	8 - 12/13
<b>White B801-9 LH</b>	Left Hand	M(D)	8 - 12/13

**FRANK**

White Man-Made Upper w/ Blue & Red Trim

- U-Throat Upper Pattern
- Right Hand Specific
- NEW Black Ice Outsole
- Fully Fabric-Lined w/ Padded Tongue and Collar
- Non-Marking Rubber Outsole w/ Stitched Toe and Defined Heel
- Fixed Black Ice & S8 Microfiber Slide Sole
- Rubber Push-Off sole

<b>B2263-8</b>	M(D)	7 - 12/13/14/15
----------------	------	-----------------



NEW

BLACK ICE



**MAX**

Blue Man-Made Upper w/ Silver & Green Trim

- U-Throat Upper Pattern
- NEW Black Ice Outsole
- Fully Fabric-Lined w/ Padded Tongue and Collar
- Non-Marking Rubber Outsole w/ Stitched Toe and Defined Heel
- Fixed Black Ice & S8 Microfiber Slide Soles on Both Shoes

<b>B2264-86</b>	M(D)	7 - 12/13/14/15
-----------------	------	-----------------



NEW

BLACK ICE



**FRED**

White Man-Made Upper w/ Grey & Blue Trim

- U-Throat Upper Pattern
- Fully Fabric-Lined w/ Padded Tongue and Collar
- Lo-Profile EVA Midsole for Cushioned Support
- Non-Marking Rubber Outsole w/ Defined Horseshoe Heel
- Fixed S8 Microfiber Slide Soles on Both Shoes

<b>B2258-5</b>	M(D)	7 - 12/13/14/15
----------------	------	-----------------



**ZIG ZAG**

Black Man-Made Upper w/ Grey & Orange Trim

- U-Throat Upper Pattern
- Fully Fabric-Lined w/ Padded Tongue and Collar
- Non-Marking Rubber Outsole w/ Defined Horseshoe Heel
- Toe Bumper for Toe Drag Protection
- Fixed S8 Microfiber Slide Soles on Both Shoes

<b>B2257-1</b>	M(D)	7 - 12/13/14/15
----------------	------	-----------------





**DALE**  
White Man-Made Upper w/ Gold & Black Trim

- Lace-to Toe Upper Pattern for a Custom Fit
- Fully Fabric-Lined w/ Padded Tongue and Collar
- Lo-Profile EVA Midsole for Cushioned Support
- Non-Marking Rubber Outsole w/ Defined Horseshoe Heel
- Toe Bumper for Toe-Drag Protection
- Fixed S8 Microfiber Slide Soles on Both Shoes

**B2259-4** M(D) 7 - 12/13/14/15



**PRO AM II**  
Black & Grey Alloy Man-Made Upper

- Blucher Upper Pattern for an Adjustable Fit
- Right-Hand Specific
- Fully Fabric-Lined w/ Padded Tongue and Collar
- Classic Non-Marking Rubber Outsole with Raised Heel
- Rubber Push-Off Sole
- Fixed S8 Microfiber Slide Sole

**B2255-1** M(D) 7-12/13/14/15 (Right Hand Only)



**TURBO II**  
Black Man-Made Upper w/ Natural Khaki Trim

- U-Throat Upper Pattern
- Fully Fabric-Lined w/ Padded Tongue and Collar
- Soft, Supportive Footbed with Fabric Surface
- Classic Non-Marking Rubber Outsole with Raised Heel
- Fixed S8 Microfiber Slide Soles on Both Shoes

**B2112-1** M(D) 7-12/13/14/15  
**B2112-1** WW(E) 7-12/13/14



**JEFF II**  
Black, White Man-Made Upper w/ Red Trim

- U-Throat Upper Pattern
- Fully Fabric-Lined w/ Padded Tongue and Collar
- Soft, Supportive Footbed with Fabric Surface
- Non-Marking Rubber Outsole w/ Defined Horseshoe Heel
- Toe Bumper for Toe-Drag Protection
- Fixed S8 Microfiber Slide Soles on Both Shoes

**B2260-7** M(D) 7-12/13/14/15



**JASON IV**  
White, Black & Grey Man-Made Upper

- U-Throat Upper Pattern
- Fully Fabric-Lined w/ Padded Tongue and Collar
- Soft, Supportive Footbed with Fabric Surface
- Non-Marking Rubber Outsole w/ Defined Horseshoe Heel
- Toe Bumper for Toe-Drag Protection
- Fixed S8 Microfiber Slide Soles on Both Shoes

**B2261-15** M(D) 7-12/13/14/15

**SETH II**  
Black & Bronze Man-Made Upper

- U-Throat Upper Pattern
- Fully Fabric-Lined w/ Padded Tongue and Collar
- Soft, Supportive Footbed with Fabric Surface
- Non-Marking Rubber Outsole w/ Defined Horseshoe Heel
- Toe Bumper for Toe-Drag Protection
- Fixed S8 Microfiber Slide Soles on Both Shoes

**B2345-1** M(D) 7-12/13/14/15



**JACK**  
Black & White Man-Made Upper

- Lace-to Toe Upper Pattern for a Custom Fit
- Fully Fabric-Lined w/ Padded Tongue and Collar
- Soft, Supportive Footbed with Fabric Surface
- Non-Marking Rubber Outsole w/ Defined Horseshoe Heel
- Toe Bumper for Toe-Drag Protection
- Fixed S8 Microfiber Slide Soles on Both Shoes

**B2251-1** M(D) 6-12/13/14/15  
**B2251-1** WW(E) 7-12/13/14



**V-STRAP**  
White Man-Made Upper w/ Grey Trim

- Adjustable Hook & Loop Strap Closure
- Fully Fabric-Lined w/ Padded Tongue and Collar
- Soft, Supportive Footbed with Fabric Surface
- Classic Non-Marking Rubber Outsole with Raised Heel
- Fixed S8 Microfiber Slide Soles on Both Shoes

**B2513-9** M(D) 4-12/13/14/15 (Unisex) \*Size chart for V-Strap Only

ORDER UNISEX	4	4 1/2	5	5 1/2	6	6 1/2	7	7 1/2	8	8 1/2	9	9 1/2	10	10 1/2	11	11 1/2	12	12 1/2	13	14	15	
MEN'S SIZE	4	4 1/2	5	5 1/2	6	6 1/2	7	7 1/2	8	8 1/2	9	9 1/2	10	10 1/2	11	11 1/2	12	12 1/2	13	14	15	
WOMEN'S SIZE	5 1/4	6	6 1/4	7	7 1/4	8	8 1/4	9	9 1/4	10	10 1/4	11	11 1/4	12								



**RICKY III**  
Black Soft Durable Man-Made Upper w/ Red Trim

- Lace-to Toe Upper Pattern for a Custom Fit
- Fully Fabric-Lined w/ Padded Tongue and Collar
- Soft, Supportive Footbed with Fabric Surface
- Non-Marking Rubber Outsole w/ Defined Horseshoe Heel
- Toe Bumper for Toe-Drag Protection
- Fixed S8 Microfiber Slide Soles on Both Shoes

**B1837-1** M(D) 6-12/13/14/15  
**B1837-1** WW(E) 6-12/13/14



**RICKY III**  
White Soft Durable Man-Made Upper W/ Black Trim

- Lace-to Toe Upper Pattern for a Custom Fit
- Fully Fabric-Lined w/ Padded Tongue and Collar
- Soft, Supportive Footbed with Fabric Surface
- Non-Marking Rubber Outsole w/ Defined Horseshoe Heel
- Toe Bumper for Toe-Drag Protection
- Fixed S8 Microfiber Slide Soles on Both Shoes

**B1837-9** M(D) 6-12/13/14/15  
**B1837-9** WW(E) 6-12/13/14





**WOMEN'S**  
PERFORMANCE & ATHLETIC

### SST 8

White & Black Full-Grain Leather w/ Red Trim

- Unique Total Interchangeable Sole Construction
- Right or Left Hand Convertible
- Söfft® Last w/ Sleek Silhouette for a more Comfortable & Stable Fit at the Widest Part of your Foot
- Goodyear® Replaceable Rubber Traction Soles
- Leather Toe-Drag Protector Stops Slide Sole Peel Back
- Stitch-Down Construction
- 2 Shoe Protectors Included & 1 Satin Parts Bag
- On Shoe (Removable): S8, H5 ST, T3, H2 UB.
- In Box: S6, S10, H7

**B999-17** Right/Left Hand M(B) 5 - 10/11  
Right/Left Hand WW(D) 5 - 10



**PRO'S CHOICE CAROLYN DORIN-BALLARD**

"I encounter every lane condition imaginable. The SST8 has the adjustable soles and heels that I need to adapt my game at a moment's notice."



### SST 8 SE

Black Full-Grain Leather & Purple Trim

- Unique Total Interchangeable Sole Construction
- Right or Left Hand Convertible
- Söfft® Last w/ Sleek Silhouette for a more Comfortable & Stable Fit at the Widest Part of your Foot
- Goodyear® Replaceable Rubber Traction Soles
- Leather Toe-Drag Protector Stops Slide Sole Peel Back
- Stitch-Down Construction
- On Shoe (Removable): S8, T3, H5 ST, H2 UB

**B927-13** Right/Left Hand M(B) 6 - 10/11

**NEW**



### SST

White Soft Nature's Hide™ w/ White Nubuck Leather

- Blucher Upper Pattern for an Adjustable Fit
- Soft, Durable Microfiber Suede Lining
- Removable Supportive Contoured EVA Footbed
- EVA Midsole for Stability & Cushioned Support
- "Ali" Last
- Goodyear® PowerPivot™ Push-Off Sole w/ Duratip Traction Toe
- Stitch-Down Construction
- On Shoe (Fixed): S8, H5 Standard

**B900-19** Right Hand M(B) 5 - 10/11  
**B900-19 LH** Left Hand M(B) 5 - 10/11







**NEW**  
BLACK ICE  
RIGHT HAND  
SPECIFIC



**MEGAN**

Silver Man-Made Upper w/ Grey & Purple Trim

- U-Throat Upper Pattern
- Right Hand Specific
- NEW Black Ice Outsole
- Fully Fabric-Lined w/ Padded Tongue and Collar
- Non-Marking Rubber Outsole w/ Stitched Toe and Defined Heel
- Fixed Black Ice & S8 Microfiber Slide Sole
- Rubber Push-Off sole

**B4265-5** M(B) 6-10/11



**HEIDI**

White & Purple Man-Made Upper

- Lace-to Toe Upper Pattern for a Custom Fit
- Fully Fabric-Lined w/ Padded Tongue and Collar
- Lo-Profile EVA Midsole for Cushioned Support
- Non-Marking Rubber Outsole w/ Defined Horseshoe Heel
- Toe Bumper for Toe-Drag Protection
- Fixed S8 Microfiber Slide Soles on Both Shoes

**B4258-8** M(B) 6-10/11



**HEIDI**

Black Man-Made Upper

- Lace-to Toe Upper Pattern for a Custom Fit
- Fully Fabric-Lined w/ Padded Tongue and Collar
- Lo-Profile EVA Midsole for Cushioned Support
- Non-Marking Rubber Outsole w/ Defined Horseshoe Heel
- Toe Bumper for Toe-Drag Protection
- Fixed S8 Microfiber Slide Soles on Both Shoes

**B4258-1** M(B) 6-10/11



**ANA**

Silver & Lt. Grey Man-Made Upper

- U-Throat Upper Pattern
- Plaid Upper Graphics
- Fully Fabric-Lined w/ Padded Tongue and Collar
- Soft, Supportive Footbed with Fabric Surface
- Classic Non-Marking Rubber Outsole with Raised Heel
- Fixed S8 Microfiber Slide Soles on Both Shoes

**B4257-5** M(B) 6-10/11

**CHEETA**

White Man-Made Upper w/ Cheetah Print & Black Trim

- U-Throat Upper Pattern
- Fully Fabric-Lined w/ Padded Tongue and Collar
- Soft, Supportive Footbed with Fabric Surface
- Non-Marking Rubber Outsole w/ Defined Horseshoe Heel
- Toe Bumper for Toe-Drag Protection
- Fixed S8 Microfiber Slide Soles on Both Shoes

**B4262-5** M(B) 6-10/11



**LYNDA**

White & Violet Man-Made Upper w/ Purple & Silver Trim

- U-Throat Upper Pattern
- Fully Fabric-Lined w/ Padded Tongue and Collar
- Soft, Supportive Footbed with Fabric Surface
- Non-Marking Rubber Outsole w/ Defined Horseshoe Heel
- Toe Bumper for Toe-Drag Protection
- Fixed S8 Microfiber Slide Soles on Both Shoes

**B4263-3** M(B) 6-10/11



**NEW**

**GROOVE**

White Man-Made Upper w/ Black Trim

- Lace-to Toe Upper Pattern for a Custom Fit
- Stitching Reacts in Black Light
- Fully Fabric-Lined w/ Padded Tongue and Collar
- Soft, Supportive Footbed with Fabric Surface
- Classic Non-Marking Rubber Outsole with Raised Heel
- Fixed S8 Microfiber Slide Soles on Both Shoes

**B4034-1** M(B) 5-10/11

**B4034-1** W(D) 5-10/11



**LORI**

White Man-Made Upper w/ Red Trim

- Blucher Upper Pattern for an Adjustable Fit
- Fully Fabric-Lined w/ Padded Tongue and Collar
- Soft, Supportive Footbed with Fabric Surface
- Non-Marking Rubber Outsole w/ Defined Horseshoe Heel
- Toe Bumper for Toe-Drag Protection
- Fixed S8 Microfiber Slide Soles on Both Shoes

**B4256-7** M(B) 6-10/11

**B4256-7** W(D) 6-10/11





**VICKY**

- White Man-Made Upper w/ Blue Trim
- U-Throat Upper Pattern
  - Fully Fabric-Lined w/ Padded Tongue and Collar
  - Soft, Supportive Footbed with Fabric Surface
  - Non-Marking Rubber Outsole w/ Defined Horseshoe Heel
  - Toe Bumper for Toe-Drag Protection
  - Fixed S8 Microfiber Slide Soles on Both Shoes

**B4260-8** M(B) 6-10/11



**RAQUEL III**

- Black Soft Durable Man-Made Upper
- U-Throat Upper Pattern
  - Perforated Upper for Breathability
  - Fully Fabric-Lined w/ Padded Tongue and Collar
  - Soft, Supportive Footbed with Fabric Surface
  - Non-Marking Rubber Outsole w/ Defined Horseshoe Heel
  - Toe Bumper for Toe-Drag Protection
  - Fixed S8 Microfiber Slide Soles on Both Shoes

**B1826-1** M(B) 5-10/11/12



**RAQUEL III**

- White Soft Durable Man-Made Upper w/ Baby Blue Trim
- U-Throat Upper Pattern
  - Perforated upper for breathability
  - Fully Fabric-Lined w/ Padded Tongue and Collar
  - Soft, Supportive Footbed with Fabric Surface
  - Non-Marking Rubber Outsole w/ Defined Horseshoe Heel
  - Toe Bumper for Toe-Drag Protection
  - Fixed S8 Microfiber Slide Soles on Both Shoes

**B1826-9** M(B) 5-10/11/12  
**B1826-9** W(D) 5-10/11



**RAQUEL III**

- White Soft Durable Man-Made Upper w/ Pink Trim
- U-Throat Upper Pattern
  - Perforated upper for breathability
  - Fully Fabric-Lined w/ Padded Tongue and Collar
  - Soft, Supportive Footbed with Fabric Surface
  - Non-Marking Rubber Outsole w/ Defined Horseshoe Heel
  - Toe Bumper for Toe-Drag Protection
  - Fixed S8 Microfiber Slide Soles on Both Shoes

**B1826-7** M(B) 5-10/11/12



**JACK JR.**

- Black & White Man-Made Upper
- Lace-to-Toe Upper Pattern for a Custom Fit
  - Fully Fabric-Lined w/ Padded Tongue and Collar
  - Soft, Supportive Footbed with Fabric Surface
  - Non-Marking Rubber Outsole w/ Defined Horseshoe Heel
  - Toe Bumper for Toe-Drag Protection
  - Fixed S8 Microfiber Slide Soles on Both Shoes

**YB2251-1** M 1/2/3/4/5



**KOLORS**

- White Man-Made Upper w/ Interchangeable Trim Colors
- U-Throat Upper Pattern
  - Interchangeable Color Card System
  - Fully Fabric-Lined w/ Padded Tongue and Collar
  - Non-Marking Rubber Outsole
  - Toe Bumper for Toe-Drag Protection
  - Fixed S8 Microfiber Slide Soles on Both Shoes

**YB1736-9** Unisex M 1/2/3/4/5/6



**RICKY III JR.**

- White Soft Durable Man-Made Upper w/ Black Trim
- U-Throat Upper Pattern
  - Fully Fabric-Lined w/ Padded Tongue and Collar
  - Soft, Supportive Footbed with Fabric Surface
  - Non-Marking Rubber Outsole w/ Defined Horseshoe Heel
  - Toe Bumper for Toe-Drag Protection
  - Fixed S8 Microfiber Slide Soles on Both Shoes

**YB1837-9** M 1/2/3/4/5



**RAQUEL III JR.**

- White Soft Durable Man-Made Upper w/ Blue Trim
- U-Throat Upper Pattern
  - Perforated upper for breathability
  - Fully Fabric-Lined w/ Padded Tongue and Collar
  - Soft, Supportive Footbed with Fabric Surface
  - Non-Marking Rubber Outsole w/ Defined Horseshoe Heel
  - Toe Bumper for Toe-Drag Protection
  - Fixed S8 Microfiber Slide Soles on Both Shoes

**YB1826-9** M 1/2/3/4



# Congratulations to the 2012

## Dexter/USBC High School All-American Team

on their scholastic and athletic achievements



### Dexter/USBC High School All-American Team

Back Row From Left: Kyle Mayberry, Matthew Farber, Zachary Fylling, Dominick Savage, Jefferson Vlasnik  
Front Row From Left: Amanda Wess, Lillie Miller, Rachel Vaughn, McKensie Haines, Sarah Voss

Five male and five female USBC High School members are selected annually for the Dexter/USBC High School All-American Team and a \$1,000 scholarship.

As a high school bowler, your selection to the Dexter/USBC High School All-American Team is based on your bowling accomplishments, academic achievement, letters of recommendation, extracurricular and community involvement, submitted essays and resumes. Minimum requirements for selection include a 3.0 grade point average on a 4.0 scale (or equivalent) and at least one letter of recommendation.

Dexter is a proud sponsor of **TEEN MASTERS™**



New York City's iconic Grand Central Terminal – home to over 750,000 daily commuters and tourists and the annual Teen Masters Grand Championships. Eight boys and girls survived months of qualifying and a week-long national finals to advance to America's high school championship event.



### “SCRIBBLE” Hi-5 JERSEY

- 100% polyester mesh material
- Moisture Wicking w/ DriGear technology
- Antibacterial Action
- UV protection
- Wash/Wear

To order visit:  
High5Gear.com



### “CYCLONE” Hi-5 JERSEY

- 100% polyester mesh material
- Moisture Wicking w/ DriGear technology
- Antibacterial Action
- UV protection
- Mesh material
- Wash/Wear

To order visit:  
High5Gear.com



### MAX POWERSTEP T3+

Only Available for Bowling Shoes w/ Removable Traction Sole Technology

- Designed for the “Power Player” who needs extra protection for their push-off shoe during aggressive play.
- Goodyear™ Non-Marking rubber sole provides T3 standard traction.
- Full rubber sidewall construction provides extra protection from sole separation caused by toe or side foot drag.
- Solid full thickness rubber perimeter design provides extra protection and durability for the sole bottom edges and the sides of midsole in forefoot.
- Adjustable upper strap attachment system works independently of the current bottom hook and loop closure.

PD1110 - Men's Medium (9 - 12)  
PD1112 - Men's Large (13 - 15)



### SHOE PROTECTORS

Grey Nylon and Black PVC

- For protection of sliding sole during off-lane use
- Sturdy fabric upper with elasticized top for a snug fit
- Durable synthetic bottoms
- Unisex sizes
- Sold in pairs

WS1560 - Unisex Small (Women's 5 - 9)  
WS1561 - Unisex Medium (Women's 9½ - 11, Men's 6½ - 9)  
WS1562 - Unisex Large (Men's 9½ - 15)



\*Shoe not included

### “SLASH” Hi-5 JERSEY

Available in Red, Pink or Green

To order visit High5Gear.com

- 100% polyester mesh material
- Moisture Wicking w/ DriGear technology
- Antibacterial Action
- UV protection
- Mesh material
- Wash/Wear



### LIMITED EDITION SHOE TOTE

Black Croc-Embossed Bowling Shoe and Accessories Tote

- Holds one pair of shoes, extra heels and soles
- Top double-zipper for easy access
- Side zip compartment to hold soles, heels and accessories
- Interior divider to keep shoes pristine
- Carry handle for convenience

LE101 One Size



\*Shoes & Accessories not included

### BOWLING BALL TOWEL

Grey Terry Cloth Ball Towel

- Generously sized
- 100% Cotton
- Soft and absorbent

WS1650 One Size



### “COAT OF ARMS” T-SHIRT

- Sizes M-XL
- 100% Cotton
- Color: Red
- Matching Coat of Arms graphic on front & back

TS249-M - Medium  
TS249-L - Large  
TS249-XL - X-Large



### “CRANIUM” T-SHIRT

- Sizes M-XL
- 100% Cotton
- Color: Black
- Front graphics glow under black light

TS248-M - Medium  
TS248-L - Large  
TS248-XL - X-Large



### MEN'S INSOLES

Replacement Inner Soles (SST's only)

- Dual Density PU Footbed
- For bowling shoes w/ removable insoles
- Soft, microfiber surface for ultimate comfort

WS1571 - Men's Small (6½ - 8½)  
WS1572 - Men's Medium (9 - 10½)  
WS1573 - Men's Large (11 - 12)  
WS1574 - Men's X-Large (13 - 15)



### WOMEN'S INSOLES

Replacement Inner Soles (SST's only)

- Dual Density PU Footbed
- For bowling shoes w/ removable insoles
- Soft, microfiber surface for ultimate comfort

WS1568 - Women's Small (5 - 6½)  
WS1569 - Women's Medium (7 - 8½)  
WS1570 - Women's Large (9 - 11)

