



KEGEL

products & parts

2009-10

WALK THIS WAY

The Kustodian WALKER literally “does the lanes” for you. Just select the pattern you want, set it on the lane, and press the button. The machine springs to life cleaning and conditioning your whole center! With no cord to watch and no more moving the machine from lane-to-lane, you now have the freedom you want with the quality and consistency you need.

Features:

- * Sanction Technology Conditioning System
- * Patented Sprayless Cleaning System
- * Battery powered for hassle-free operation
- * Dry-cell batteries can last up to 60 lanes per charge
- * Recharge as many as 400 times before battery replacement with proper maintenance
- * Zero Turn Radius for easy movement from lane-to-lane
- * Lane whiskers auto-align the machine on to each lane
- * Easy to use full color “Touchscreen Interface”
- * 31 Lane Patterns in memory
- * Change microliter liter board setting with the touch of a button
- * Battery saving auto-shutdown if not in use for 15 minutes
- * Adjustable guide rollers to consistently center the machine on any lane or gutter track
- * Battery Back-up included (provides up to an extra 25 Lanes)

Machine Weight - 425 lbs | 192.8 kg

Part Number:

17-5500D (115V/60 Hz) MODEL D (SPORT EDITION)
17-5550D (230V/50 Hz) MODEL D (SPORT EDITION)



- * Easy to use full color “Touchscreen Interface”
- * 31 Lane Patterns in memory
- * Change microliter per board setting with the touch of a button
- * Dry-cell batteries can last up to 60 lanes per charge
- * Recharge as many as 400 times before battery replacement with proper maintenance
- * Optional Battery Back-up (provides up to an extra 25 Lanes)

17-5400D (115V/60 Hz) MODEL D (SPORT EDITION)
17-5450D (230V/50 Hz) MODEL D (SPORT EDITION)

Machine Weight - 382 lbs | 173.3 kg



CUT THE CORD

The Kustodian ION is battery powered so you no longer need to hassle with the cord during use. Just set it on the lane and press the button. It will clean and condition the lane, giving you more time to do other things.

Features:

- * Sanction Technology Conditioning System
- * Patented Sprayless Cleaning System
- * Battery powered for hassle-free operation *
- * Dry-cell batteries can last up to 40 lanes per charge
- * Recharge as many as 400 times before battery replacement with proper maintenance

* Charging cord is included.

NOTE: AC/DC Model B also runs on power cord.

Machine Weight:

ION MODEL B - 359 lbs | 162.8 kg
ION MODEL D (SPORT EDITION) - 382 lbs | 173.3 kg

Part Number:

17-5400 (115V/60 Hz) MODEL B
17-5450 (230V/50 Hz) MODEL B



Only in Model B



Wireless Ready

Requires both KOSI and the Wireless Connectivity Kit.

QUALITY IS THE KEY

The Kustodian PLUS established a high benchmark for the Kustodian family of lane machines. It is equipped with many improvements such as the upgraded Conditioner Transfer System and Sprayless Cleaning System. All components have been tested for maximum durability and consistent performance.

Features:

- * Sanction Technology Conditioning System
- * Patented Sprayless Cleaning System eliminates overspray
- * Clean and Condition the lane in less than 90 seconds
- * Condition only, clean only, and simultaneous modes
- * 6 Drive Speeds for smooth lengthwise taper
- * Large recovery tank can hold 50+ lanes of waste before emptying
- * Cleaning cloth waste roll is located on top for easy removal
- * KOSI is included to make pattern adjustments easy

Machine Weight - Weight: 302 lbs | 137 kg

Part Number:

17-5100 (115V/60 Hz) MODEL B
17-5150 (230V/50 Hz) MODEL B



AFFORDABLE QUALITY

The Crossfire is a compact, durable and highly functional lane machine at an extremely affordable price. This wick combination lane machine allows small centers to experience high quality lane maintenance only Kegel can deliver.

Features:

- * Cleans and conditions the lane in about 80 seconds
- * On-board keypad for simple machine programming
- * 6 High-Flow Wick Pads (upgradable)
- * 12 Lane Conditioner Capacity (upgradable)
- * 32 Lane Cleaner Capacity
- * 3 Drive Speeds for enhanced pattern taper
- * Compact Design

AC Machine Weight

275 lbs. | 124.7 Kg

Battery Machine Weight

325 lbs | 147.7 Kg

Part Number:

Standard Edition - 6 PAD MODEL B

17-5200 (115V/60 Hz) 6 PAD/CAM MACHINE
17-5250 (230V/50 Hz) 6 PAD/CAM MACHINE

Battery Operated - 6 PAD

17-5600 (115V/60 Hz) 6 PAD/CAM MACHINE
17-5650 (230V/50 Hz) 6 PAD/CAM MACHINE

Optional Upgrade Kit

Increase to 8 Wick Pads and Conditioner Capacity to 60 lanes
158-8241 - CROSSFIRE UPGRADE KIT - 115V
158-8241E - CROSSFIRE UPGRADE KIT - 230V



NEW MODEL! BATTERY OPERATED

Features:

- * Two dry-cell batteries can last up to approximately 40 lanes per charge
- * Recharge as many as 400 times before battery replacement with proper maintenance

conditioners

Wick-Pad Technology



Physical Properties:

- * Viscosity - 23 cps.
- * Surface Tension - 28.1 dynes/cm. (F/L)
- * Shipping Weight - 40 lbs.
- * Packaging: 1.25 gallon containers for easy use
(4 containers per case = 5 gallons)

Part Number: 156-8105



Physical Properties:

- * Viscosity - 15.3 cps.
- * Surface Tension - 27.8 dynes/cm. (F/L)
- * Shipping Weight - 40 lbs.
- * Packaging: 1.25 gallon containers for easy use
(4 containers per case = 5 gallons)

Part Number: 156-8085



Physical Properties:

- * Viscosity - 14 cps.
- * Surface Tension - 27.2 dynes/cm. (F/L)
- * Shipping Weight - 40 lbs.
- * Packaging: 1.25 gallon containers for easy use
(4 containers per case = 5 gallons)

Part Number: 156-8055



Physical Properties:

- * Viscosity - 29.6 cps.
- * Surface Tension - 26.3 dynes/cm. (F/L)
- * Shipping Weight - 40 lbs.
- * Packaging: 1.25 gallon containers for easy use
(4 containers per case = 5 gallons)

Part Number: 156-8125



Sanction® Technology



Physical Properties:

- * Viscosity - 35.4 cps.
- * Surface Tension - 28 dynes/cm. (F/L)
- * Shipping Weight - 40 lbs.
- * Packaging: 1.25 gallon containers for easy use
(4 containers per case = 5 gallons)

Part Number: 156-8115



Physical Properties:

- * Viscosity - 39.1 cps.
- * Surface Tension - 27.3 dynes/cm. (F/L)
- * Shipping Weight - 40 lbs.
- * Packaging: 1.25 gallon containers for easy use
(4 containers per case = 5 gallons)

Part Number: 156-8075



Physical Properties:

- * Viscosity - 39.6 cps.
- * Surface Tension - 26 dynes/cm. (F/L)
- * Shipping Weight - 40 lbs.
- * Packaging: 1.25 gallon containers for easy use
(4 containers per case = 5 gallons)

Part Number: 156-8025



Physical Properties:

- * Viscosity - 29.7 cps.
- * Surface Tension - 27 dynes/cm. (F/L)
- * Shipping Weight - 40 lbs.
- * Packaging: 1.25 gallon containers for easy use
(4 containers per case = 5 gallons)

Part Number: 156-8095



FOR SANCTION & WICK MACHINES

NPS™ (NO PIN SLIDE)

NPS (No Pin Slide) creates a textured surface which helps the pins grip and fall down rather than slide out of range. Apply it to the pin deck and the problem is solved.



Physical Properties:

- * Weight per container - 9 lbs.
- * Shipping Weight - 40 lbs.
- * Packaging: 4 gallons per case
- * Concentrated

Part Number: K-99C



EZ Core Technology makes changing cloth "Quick & EZ"! Stop handling dirty cloth and get ultimate cleaning results with better performance.

Physical Properties:

- * Color - White
- * Roll Dimensions - 43" wide x 60' long
- * Shipping Weight - Under 12 lbs.
- * Packaging: 4 rolls per case

Part Number:

K2 Select (*Reusable PVC Core*) - 153-0047EZ

K2 Kloth (*Cardboard Core*) - 153-0047P

DROP & MOP®

Drop & Mop is an all purpose tablet floor cleaner designed for bowling centers. Its formula was created to leave NO sticky residue so your bowlers' shoes stay clean both on and off the lanes.

- * Mixes up fresh every time you mop for maximum power
- * Cuts through dirt & grease with ease
- * Easily lifts set-in grout stains
- * Includes mild bleaching action
- * Concentrated product reduces waste & pollution
- * Time-released formula provides a Clean & Fresh scent
- * Pre-measured tablet controls costs



Part Number: 156-8565

cleaners

NEW X-TRA CONCENTRATED CLEANER!

DEFENSE CX4



Physical Properties:

- * pH: 11.9
- * Shipping Weight - Only 13 lbs.
- * Packaging: 2 liter bottles for easy use
(2 bottles per case = 4 liters)

Part Number: 156-8425

DEFENSE-C



Physical Properties:

- * pH - 12.2
- * Shipping Weight - 48 lbs.
- * Packaging: 2.5 gallon containers for easy use
(2 containers per case = 5 gallons)

Part Number: 156-8405



Physical Properties:

- * pH: 7.25
- * Shipping Weight - 48 lbs.
- * Packaging: 2.5 gallon containers for easy use
(2 containers per case = 5 gallons)

Part Number: 156-8415



AIR TIGHT
PLASTIC SEAL

Physical Properties:

- * pH - 7.8
- * Appearance - White Tablet
- * Scent - Citrus
- * Tablet Weight - 50 g
- * Shipping Weight: Less than 10 lbs.
- * Packaging: 80 Tablets per Pail

Part Number: 156-8500

Note: All Kegel cleaners meet European compliance requirements.

kustodian machines

| | WALKER SPORT | ION SPORT | ION | PLUS |
|---|-----------------|--------------|-----|------|
| CONDITIONING | | | | |
| Sanction Technology conditioning system | ✓ | ✗ | ✗ | ✗ |
| Conditions each lane in less than 90 seconds | ✓ | ✗ | ✗ | ✗ |
| Conditioner float switches with low level warning message | ✓ | ✗ | ✗ | ✗ |
| Low maintenance brush transfer conditioning system | ✓ | ✗ | ✗ | ✗ |
| Left-Right pattern control | ✓ | ✗ | ✗ | ✗ |
| "Oil Only" function | ✓ | ✗ | ✗ | ✗ |
| Touchscreen control of microliter stream | ✓ | ✗ | | |
| CLEANING | | | | |
| Sprayless cleaning system | ✓ | ✗ | ✗ | ✗ |
| Ability to monitor and adjust cleaner output to the milliliter | ✓ | ✗ | ✗ | ✗ |
| Cleaner float switches with low level warning message | ✓ | ✗ | ✗ | ✗ |
| Large waste recovery tank (50+ lanes before emptying) | ✓ | ✗ | ✗ | ✗ |
| Duster/Cleaning cloth waste roll on top for easy removal | ✓ | ✗ | ✗ | ✗ |
| Cushion roller wrap for better cleaning | ✓ | ✗ | ✗ | ✗ |
| Super quiet DC vacuum motor | ✓ | ✗ | ✗ | |
| "Clean Only" function | ✓ | ✗ | ✗ | ✗ |
| "Dust Only" function | ✓ | | | |
| Adjustable "End Cleaning" and "Return" distances | ✓ | ✗ | ✗ | ✗ |
| Capability to turn pindeck spray on/off | ✓ | ✗ | ✗ | ✗ |
| Multi-Adjustment squeegee assembly | ✓ | ✗ | ✗ | ✗ |
| Analog cleaning control | ✓ | ✗ | | |
| DRIVE | | | | |
| Patented 6 variable drive speeds | ✓ | ✗ | ✗ | ✗ |
| Seventh adjustable cleaning speed | ✓ | ✗ | | |
| Self-Adjusting drive speeds | ✓ | ✗ | | |
| Zero Turn Radius lane to lane walking function | ✓ | | | |
| Auto aligning lane whiskers | ✓ | | | |
| Smart processor auto-align memory | ✓ | | | |
| Object detection | ✓ | | | |
| KEYPAD/PLC | | | | |
| Standard 2-line display keypad | | | ✗ | ✗ |
| Full Color 5" touchscreen keypad | ✓ | ✗ | | |
| One program for AM and PM | | | ✗ | ✗ |
| Three programs for AM and PM | ✓ | ✗ | | |
| Automatic burn pair | ✓ | | | |
| Stores 4 programs in memory | | | ✗ | ✗ |
| Stores 30 programs in memory (18 can be adjusted) | ✓ | ✗ | | |
| Test outputs | ✓ | ✗ | ✗ | ✗ |
| Coded error messages | | | ✗ | ✗ |
| Full detailed error messages with help | ✓ | ✗ | | |
| BATTERIES | | | | |
| On-board charger | | | ✗ | |
| Separate battery charger | ✓ | ✗ | | |
| 2 Dry Cell batteries (Approx. up to 40 lanes per charge - 400 cycles) | | | ✗ | |
| 2 Dry-Cell batteries (Approx. up to 60 lanes per charge - 400 cycles) | ✓ | ✗ | | |
| Dual power capabilities (operates with or without power cord) | | | ✗ | |
| Battery Back-up Pack (provides up to an extra 25 Lanes) | ✓ | OPT | OPT | |
| ACCESSORIES | | | | |
| KOSI software kit included (Kegel Online Support Interface) | ✓ | ✗ | ✗ | ✗ |
| Bluetooth® wireless capability (KOSI & Connectivity Kit Required) | | | OPT | OPT |

lane conditioners

SANCTION TECHNOLOGY

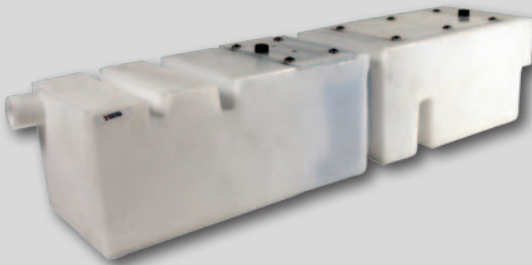
| PROPERTIES | NAVIGATE | INFINITY | PRODIGY | DEFENSE-S | OFFENSE HV |
|-----------------------------------|----------------|--------------|--------------|----------------|----------------|
| VISCOSITY | 29.6 | 35.4 | 29.7 | 39.6 | 39.1 |
| SURFACE TENSION (Force/Length) | 26.3 dynes/cm. | 28 dynes/cm. | 27 dynes/cm. | 26 dynes/cm. | 27.3 dynes/cm. |
| PRESSURE & TUBING LENGTH | | | | | |
| 50 µL@ 20 LBS | 15" tubing | 15" tubing | 15" tubing | 7-3/4" tubing | 8" tubing |
| 50 µL@ 15 LBS | 10" tubing | 11" tubing | 10" tubing | 4-3/4" tubing | 5" tubing |
| 40 µL@ 20 LBS | 21" tubing | 11" tubing | 21" tubing | 11-1/4" tubing | 12" tubing |
| 40 µL@ 15 LBS | 14" tubing | 8" tubing | 14" tubing | 8" tubing | 8" tubing |
| DURABILITY | | | | | |
| High League Lineage | 4.5 | BEST | 3.5 | 4.5 | 3 |
| High Open Play Lineage | BEST | 3 | 4.5 | 3 | 4 |
| Reduced Pinsetter Calls | 4.5 | 4 | BEST | 3 | 4 |
| Cleaning | 4 | 3 | 4 | 2 | BEST |
| Carry Down | 4.5 | 4 | BEST | 4 | 3 |
| LANE SURFACES | | | | | |
| Pro Lane™ | BEST | 3 | 4.5 | 3 | 3 |
| Anvilane™ | 4 | BEST | 4 | 4 | 4 |
| AMF HPL™ | 4 | BEST | 4 | 4.5 | 4 |
| Lane Shield™ | 4 | 4 | 4 | 4 | BEST |
| Guardian™ | 4 | 4 | 4 | BEST | 4 |
| WOOD FINISHES | | | | | |
| Water Base | 3 | 4 | 3 | BEST | 3 |
| 100% Solids | 3 | 4 | 3 | BEST | 4 |

WICK/PAD TECHNOLOGY

| PROPERTIES | NAVIGATE | CROSSFIRE | PRODIGY | DEFENSE-HF | OFFENSE LV |
|-----------------------------------|----------------|----------------|--------------|----------------|----------------|
| VISCOSITY | 29.6 | 23 | 29.7 | 14 | 15.3 |
| SURFACE TENSION (Force/Length) | 26.3 dynes/cm. | 28.1 dynes/cm. | 27 dynes/cm. | 27.2 dynes/cm. | 27.8 dynes/cm. |
| WICKING TIME | 13 minutes | 10 minutes | 14 minutes | 8 minutes | 8 minutes |
| DURABILITY | | | | | |
| High League Lineage | BEST | 4 | 3.5 | 3 | 4 |
| High Open Play Lineage | BEST | 4 | 4.5 | 3 | 4 |
| Reduced Pinsetter Calls | 4.5 | 4 | BEST | 4 | 4 |
| Cleaning | 4 | 4.5 | 4 | 4 | BEST |
| Carry Down | 4.5 | 4.5 | BEST | 4 | 3 |
| LANE SURFACES | | | | | |
| Pro Lane™ | BEST | 4 | 4.5 | 3 | 3 |
| Anvilane™ | 4 | BEST | 4 | 3 | 4 |
| AMF HPL™ | 4 | 4 | 4 | 4 | BEST |
| Lane Shield™ | 4 | BEST | 4 | 4 | 4 |
| Guardian™ | 4 | 4 | 3 | 4 | BEST |
| WOOD FINISHES | | | | | |
| Water Base | 3 | BEST | 3 | 4 | 4 |
| 100% Solids | 3 | BEST | 3 | 4 | 4 |



Vacuum Motor - See *Motors & Speed Controls*
 Following Items are Not Pictured
Vacuum Housing - 153-0204H
Fan Blade - 153-0204F
Flexible Hose (*Sold By The Inch*) - 154-0260



5" Cleaner Tank Filter - 154-0212B
1/2" O-Ring - 154-0287C



Universal In-Line Filter Assembly - 154-8867A
In-Line Filter Assembly - 154-8887 - KP | ION | KW

Cleaner Supply Tank Only - 154-8840 - KK | PX-C | XF
Complete Cleaner Tank Assembly - 154-8680 - STD | ELT | PXS-C | EP
Complete Cleaner Tank Assembly - 158-8433C - KW | KP-B | ION-B
Cleaner Supply Tank Only - 158-8433 - KW | KP-B | ION-B
Cleaner Supply Tank Only - 154-8894 - KP-A | ION-A
Expandable Supply Tank Plug (1-1/2") - 153-0246A
Rubber Insert and Plug for Supply Tank - 153-0247

Recovery Tank - 153-8841 - PXS-A,B | PX-A,B | XF

Recovery Tank - 154-8683 - PXS-C | PX-C | KK | KP-A | ELT | STD | ION-A
Folded Recovery Tank Filter (*for tank 154-8683*) - 154-8684

Recovery Tank - 158-8434 - KP-B | ION-B

Recovery Tank - 158-8617 - KW

Recovery Tank Filter (*for tanks 158-8434 & 158-8617*) - 158-0406

Recovery Tank Gasket (*for tanks 158-8434 & 158-8617*) - 158-0405

Cleaner Pump Drive Motor

154-8874 (115VAC)

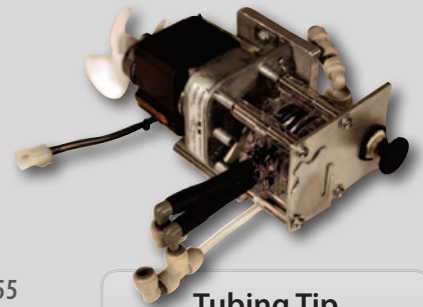
154-8875 (230VAC)

158-8404 (24VDC)

Peristaltic® Cleaner Pump - 154-0860A

Norprene® Tubing - 154-0861B

Cleaner Volume Control Valve - 154-1855



Tubeing Tip

Kegel recommends you change your Norprene® tubing at least once a year to ensure consistent cleaner volume.

LEGEND

| | | |
|-------|--|--------------------|
| EP | Elite PLUS | |
| ELT | Elite | |
| STD | Standard | |
| KW | Kustodian Walker | |
| IONXL | Kustodian ION XL | |
| ION | Kustodian ION | |
| KP | Kustodian PLUS | |
| KK | Kustodian | |
| XF | Crossfire | |
| PXS | { Sanction Machine II Phoenix-S Brunswick Echo | |
| PX | | Phoenix (Firebird) |
| LW | | LaneWalker |
| LCM | LaneWalker Cleaning Machine | |
| XL | Excel | |
| DT | Dart (Breeze) | |

Letter suffix indicates model type (i.e. Model B).

Potentiometer

158-8846 - KP

158-8413 - ION | KW

Complete Cleaner Pump Assembly

154-8859 (115VAC) - KP-A | EP

154-8859E (230VAC) - KP-A | EP

Complete Cleaner Pump Assembly

158-8404C (24VDC) - ION | KW

158-8847 (24VDC) - KP

Solenoid Valve (3-Way)

154-1851 (115VAC) - KP-A Only | EP

154-1852 (230VAC) - KP-A Only | EP

Kustodian PLUS (Model A Only)

24VDC Cleaner Pump Conversion Kit

154-8844 (115V)

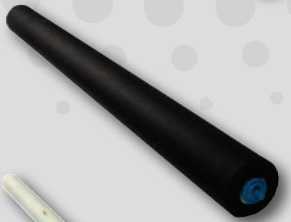
154-8845 (230V)

Improve Your Cleaning Capabilities



Cushion Roller With Cloth Cover - 153-8839
 Compatible with XF | KP | EP | ION | KW
 Contact Tech Support for use on these models: PX | PXS | KK | STD | ELT
Individual Cloth Cover (Requires 2 covers per roller)

Size A - 154-8889A
 Size B - 154-8889B
 Size C - 154-8889C
 Size D - 154-8889D
 Size E - 154-8889E



Cushion Roller - 153-8838 - PX | PXS | KK | STD | ELT
Cushion Roller - 153-8026 - LW
Cushion Roller - 153-8238B - LCM



PVC Take-Up Reel - 153-8824
 (Not required with K2 Select EZ Core Cloth)
PVC Take-Up Reel Clamp - 154-6248 (Not Pictured)



Squeegee Blades (Blue pair - 42") - 153-8204
Complete Squeegee Assembly (Blue- 42") - 153-0202

Squeegee Blades (Blue pair - 45") - 153-8204E
Complete Squeegee Assembly (Blue- 45") - 153-0202D
 ION-D | KW-D



Squeegee Blades (Brown pair) - 153-8834
Squeegee Assembly Kit (Brown) - 153-0202A



**Spray Jet Cup
 Assembly Upgrade**
 154-8692



**Spray Jet Assembly
 Tip Retainer** - 153-0218
Spray Jet Body - 153-6252
Nylon Body - 153-0217

Spray Jet Cleaner Pumps

Kegel Cleaner Spray Pumps *
 158-8212 (115VAC)
 158-8213 (230VAC)



* For older Standard AC and SE Machines with Pump Mounted Over Buffer Motor.

154-8651A (115VAC)
 154-8652A (230VAC)

Note: This pump replaces SHURflo® & FLOJET® pumps.

Cleaner Pump Repair Kits

Valve/Diaphragm Kit for Kegel Pump - 158-8212K

Cleaner Tip & Hose - 154-8852 - KP | EP | ION | KW

Screen Check Valve - 153-0220

Outside Spray Tip (1501) - 154-0007

Inside Spray Tip (8003) - 153-0207

Inside Spray Tip (11003) - 153-0207A

Cleaner Tip Check Valve (Pkg of 5)

154-0862K - KP | EP | ION | KW



Cleaner Funnels

Cleaner Funnel - Long Stem
 158-8252

Cleaner Funnel - Short Stem
 154-8647

Cleaner Funnel - No Stem
 153-0252



Conditioner Transfer System



Conditioner Transfer Brush Assembly - 154-0866 - KP | EP | ION | KW

Buffer Brush - 154-8641 - STD | ELT | PXS-C | KK | KP | PX-C | EP | ION | XF | KW

Buffer Brush - 153-8407 - PXS-A,B | PX-A,B | XL | DT

Buffer Brush - 153-8017 - LW

Transfer Roller - 153-8408 - PX-A,B | XL | DT

Transfer Roller - 154-8338 - PX-C

Transfer Roller (2.25 diameter) - 154-8207 - PXS-A,B

Transfer Roller (1.75 diameter) - 154-8208 - PXS-A,B

Transfer Roller - 154-8608 - KK | ELT | PXS-C | STD

Transfer Roller - 158-8204 - XF

Buffer Belt - 154-9615 - STD | ELT | KK | KP | PXS-C | EP | ION

Buffer Belt - 153-9015 - PXS-A,B | PX-A,B | LW

Buffer Belt - 153-9817 - PX-C

Buffer Belt - 158-9201 - XF

Buffer Belt - 158-9026 - KW

Head Drive Belt - 154-9201 *Compatible with all applications.*

Wicks



Glueless Wick Plate Assembly

3" - 153-8103A

Replacement for glued wicks

3.125" - 153-8123

Only Compatible with PX-C

3.125" - 158-8223

Only Compatible with XF



5" - 153-8105A

Replacement for glued wicks

5.125" - 153-8125

Only Compatible with PX-C

5.125" - 158-8225

Only Compatible with XF



7" - 153-8107A

Replacement for glued wicks

7.125" - 153-8127

Only Compatible with PX-C

7.125" - 158-8227

Only Compatible with XF

10" - 153-8110A

Replacement for glued wicks

10.125" - 158-8230

Only compatible with XF

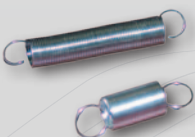
Not Pictured

45" Felt Material for Glued Wicks - 153-0005 (4")

45" Felt Material for No-Glue Wicks - 153-0005B (5")

Felt Material Stock for No-Glue Wicks - 153-0005D

(Custom cut to be purchased by the inch)



Wick Spring (0.438 OD x 2.75) - 153-2095

Wick Spring (XF Only) - 153-2740

Pattern Smoothing Pads



Pattern Smoothing Assembly - 154-8617



Velcro for Smoothing Pad
154-8617V (10 per pack)



Smoothing Pad Spring
153-2540A

1. Pulse Suppression Assembly

154-8660 - ELT | PXS-C | STD | EP

154-8216K - PXS-A,B

154-8816 - KK | KP | ION | KW

2. Pressure Gauge (60 psi) - 158-1613 (Replaces 154-1225)

3. Oil Control Valve (24VDC) - 154-1209

Not Pictured

Calibration Valve (115VAC) - 154-1210 - PXS-A,B

4. Vent Valve - 154-8817 (Electrical Vent Valve Discontinued)

5. Oil Tank Assembly with Fittings/Float

154-8682 - ELT | STD | PXS-C | KW | KP | EP | ION

Oil Tank Assembly with Fittings ONLY

154-8842 - KK

6. 5" Oil Tank Filter - 154-0212

7. Float Switch Assembly

154-1203 - XF

154-1617 - ELT | PX-C | PXS-C | KP | EP | ION | KW

154-8203 - PXS-A, B (3" Vertical for tank 154-8201C)

154-8203A - STD | ELT (7" Vertical for tank 154-8615C)

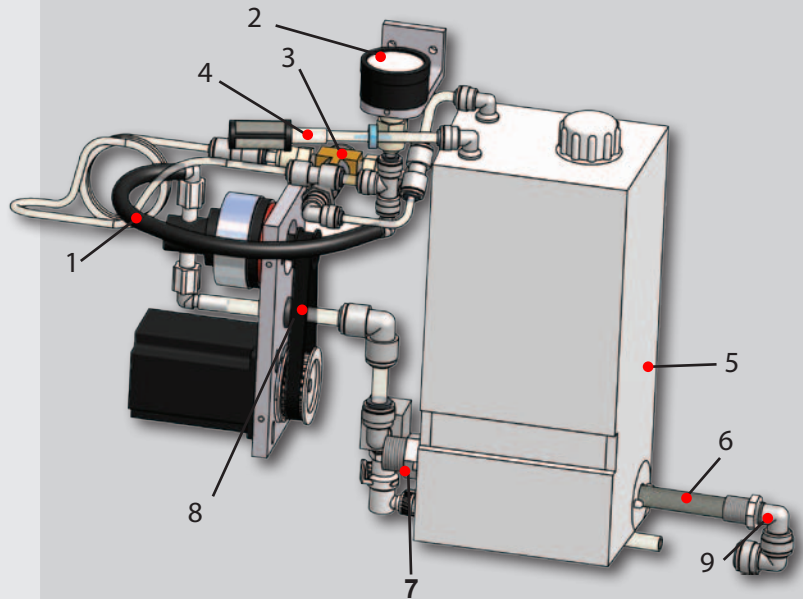
8. Belt for Conditioner Pump Motor

154-9202A (60Hz)

154-9215 (50Hz)

9. Elbow 3/8" Tube x 1/4" NPT - 154-0225

Conditioner Plate Assembly



Miscellaneous

Conditioner Head Tip & Hose Holder Assembly (includes tubing)

1-1/4" Tip Holder (PXS only) - 154-8285

3-1/2" Tip Holder (Painted Machines with Transfer Roller) - 154-8883

4-1/2" Tip Holder (Painted Machines with Transfer Brush) - 154-8851

5-1/4" Tip Holder (Upgraded Transfer Brush Models) - 154-8896

Retaining Spring for Head - 153-2713

Graduated Cylinder (25ml) - 154-0215

Graduated Cylinder (50ml) - 154-0215A

Felt Strip on Splash Guard Tank - 154-8333 - PX-C Only

Felt Kit for Transfer and Spray Jet Wall - 154-8669 - PXS-C | STD | KK | ELT

Felt for LDS Splash Guard - 154-8690 - All painted Sanction Technology Machines

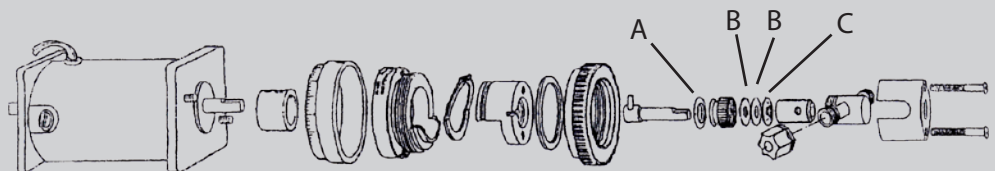
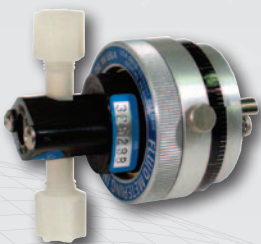
Felt Strip for Transfer Wall - 154-8669A - KP | EP | ION | KW

Oil Funnel - 153-0052 (No Stem)

Funnel with Connecting Stem for Conditioner Tank (Small) - 154-8648

Oil Pencil Tip (Molded) - 154-6832

FMI Oil Pump - 154-1214



A. O-Ring for Fluid Metering Pump (Orange) - 154-1214E

B. Seal for Fluid Metering Pump (White) - 154-1214A

C. Gland Seal for Fluid Metering Pump (Red) - 154-1214D

Programmable Logic Controllers (PLC)



CPM2A Microprocessor
 154-1801 (115VAC / 230VAC)
 158-1423 (24VDC)

Not Pictured

Keypad

154-8806 - KK | KP | ION

154-8807 - PX-C

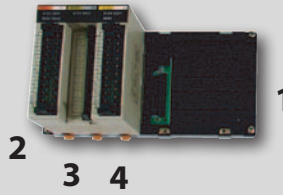
154-8809 - Firebird

Keypad Cable - 154-1803

Omron PLC Battery

153-1001C - C28H | C200H

154-1804 - CPM2A



C200HS Items

1. Mounting Rack C200H - 153-1811

2. Input Module ID212 - 153-1816

3. Output Module OC221 - 153-1814

4. Output Module OC222 - 153-1815

Not Pictured

Keypad with Cable - 153-1002C

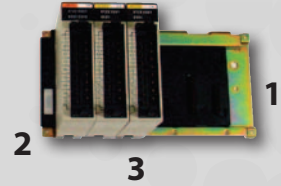
Microprocessors No Longer Available:

C200HS PLC

C28H PLC

SP-16 PLC

Call 863-734-0200 for more information.



C200HG Items

1. Mounting Rack C200HW - 154-1201B

2. Input Module ID212 - 153-1816

3. Output Module OC222 - 154-8231

(With 24VDC Relay)



Microprocessor C200HG - 154-1201

TWIDO PLCs (Crossfire Only)

Programmable Logic Controller - 155-1240

Real Time Clock - 158-1201C

Connector (RS485 Mini-DIN) - 158-1201D

Output Module - 158-1202

Keypad with 4 Line Display - 158-8209

TWIDO PLC Battery (1/2 AA) - 155-1246

Keypad Cable - 158-1203C

Keypad Assembly - 158-8209

Sport Edition PLCs

PLC - 158-1610P

Touchscreen - 158-1610T

Converter for CP1 - 158-1610C

Communication Cable - 158-1610CC



Power Supply C200HG - 154-1201P

Replacement Batteries & Chargers

DC Voltage Regulator - 158-8417

Smart Charger (IQ-4) - 158-1452 for ION

Battery Charger Assembly

158-8411 (115V) - ION

158-8457E (230V) - ION

158-8616 (115V) - KW

158-8621 (230V) - KW



Odyssey PC925 (Sold in Pairs) - 158-8651

Odyssey PC1200 (Sport Edition - Sold in Pairs) - 158-8652

Battery Back-up



Battery Pack Sport Edition - 158-8631

Battery Pack Upgrade for Model B ION - 158-8635

Odyssey PC680 (Sold in Pairs) - 158-8650

NOTE: Battery voltage must be closely matched on both batteries for best performance.

Omron® Brand Relays

LY2 Relay - 153-1016D (24VDC Coil)
LY2 Relay - 153-1016 (115V) 153-1616 (230V)
LY3 Relay - 153-1018 (115V) 153-1618 (230V)
LY4 Relay - 153-1406 (115V) 154-1611 (230V)
PLC Output Relay - 153-1032 (24VDC Coil)

Phoenix® Brand Relays

MY4 Relay (24VDC) - 158-1427
Secondary Relay Assembly (24VDC)
154-1835 - KK | KP

Automation Direct® Relays

2 Pole (15A - 24VDC) - 158-1413
2 Pole (10A - 24VDC) - 158-1420G

Relays for Sport Edition

Relay (24VDC DPDT) - 158-1458
Relay (Solid State) - 158-1460
Relay (DPDT 10A) - 158-1462
Relay (Super MY4 24VDC) - 158-1463

Other Electrical Components

Duster Switch (Large) - 154-1603 - ELT | PXS-C | KK | KP | PX-C | EP | ION
Duster Switch (Small) - 153-1202 - for PXS-A,B | PX-A,B | XF
Brush Switch - 153-1203 - for All Machines
Squeegee Switch (Small) - 153-1203 - PXS-A,B | KP | PX-A,B | EP | XF | ION
Squeegee Switch (Large) - 154-1015 - STD | ELT | PXS-C | KK | PX-C

Pass-Through Sensor - 153-1031A
Sensor Plug and Cable - 153-1031B
Proximity Sensor - 154-1220
Proximity Sensor (XF-A) - 158-1208

Solenoid (115V) - 153-1027
Solenoid (220V) - 153-1627
Solenoid Cable Assembly 7.625" - 153-8812 (PX8)
Solenoid Cable Assembly 8.25" - 153-8812A (PXC)

LCD Amp Gauge Assembly - 158-8410 ION | KW
Red Push Button (Normally Open) - 153-1408
Horsepower Resistor 0.025 Ω - 153-1015A
Horsepower Resistor 0.050 Ω - 153-1015
Arc Suppressor - 158-1438
Contactor - 158-1465
(Used for Sport Edition Vacuum & Auto Shut Down Relay)

Head Motor 6.0μF Capacitor
154-1208 - PXS | KK | KP | STD | ELT | EP



Oil Pump Motor 1.5μF Capacitor
154-1208 - PXS | KK | KP | STD | ELT | EP

Fuses & Breakers

Panel Mount Fuse Holder (115V) - 153-1028
Fuse 0.5A (UL) - 154-1261
Fuse 0.75A (UL) - 154-1262
Fuse 1.8A (UL) - 154-1265
Fuse 2.25A (UL) - 154-1266
Fuse 3.2A (UL) - 154-1267
Fuse 4A (UL) - 154-1268C
Fuse 7.5A (UL) - 154-1270
Fuse 8A (UL) - 154-1270C
Fuse 10A (UL) - 154-1273
Fuse 20A (UL) - 154-1274C

Panel Mount Fuse Holder (230V) - 153-1028E
Fuse 315mA (IEC - 230V) - 154-1260E
Fuse 1A (IEC - 230V) - 154-1264E
Fuse 1.6A (IEC - 230V) - 154-1265E
Fuse 4A (IEC - 230V) - 154-1267E
Fuse 6.3A (IEC - 230V) - 154-1269C

Circuit Breaker 8A - 153-1810
Circuit Breaker 10A - 153-1030
Circuit Breaker 15A - 154-1610
Circuit Breaker 20A (24VDC) - 158-1451
Rocker Breaker 10A - 154-1272

Breaker for E-Stop (Prior to 2008) - 154-1251
Breaker for E-Stop (2008 and later) - 154-1251A
2008 E-Stop - 154-1250A
(2-Hole Pattern)



Blade Type Fuses

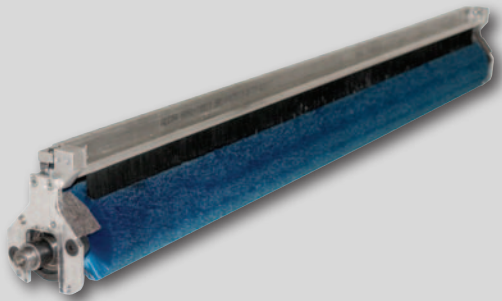
Fuse 25A - 158-1439 for Voltage Regulator - ION | KW
Fuse 40A - 158-1440 for IOTA Battery Chargers

Maxi-Fuse 40A (for Fuse Link) - 158-1454 for ION
Fuse Link Assembly - 158-8421

Power Cord Components

| Description | 115VAC | 230VAC |
|-------------------------------------|----------|-----------|
| Male Plug End (15A) | 153-1025 | 153-1625 |
| Male Plug End (20A) | 153-1825 | N/A |
| Female Twistlock Plug (15A) | 153-1024 | 153-1624 |
| Female Twistlock Plug (20A) | 153-1822 | 153-1824 |
| 25' Charging Cord Assembly ION KW | 158-8425 | 158-8425E |
| Velcro Strap For Cord | 154-0242 | 154-0242 |

upgrades



Conditioner Transfer System Upgrade (1 piece)
158-8430 - Compatible with: PXS-C | KK | STD | ELT | KP-A | ION-A

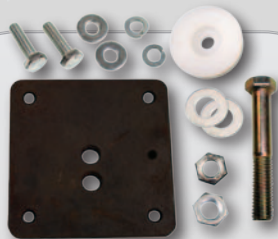
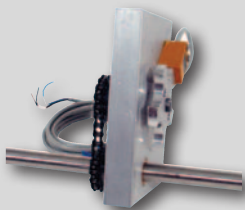
Upgrades for Crossfire

Complete Upgrade - Includes 8 Wicks & Cam Roller, and Large Conditioner Supply Tank
158-8241 (115V) | 158-8241E (230V)

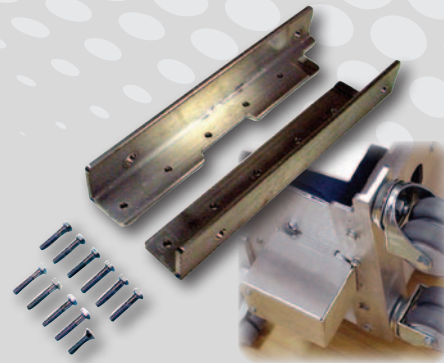
Conditioner Tank Upgrade
158-8215 (115V) | 158-8215E (230V)

8 Pad Wick & Cam Kit - 158-8214

Lane Distance Sensor (LDS) Upgrade w/Proximity Sensor



Handle Reinforcement Kit
154-8284



Transport Caster Upgrade
154-8281

Transport Caster Upgrade

This is a must-have item for Phoenix and Phoenix-S Model A and B customers. This upgrade will widen the wheelbase of your existing machine and make it much more stable in the transport and storage position. This upgrade takes approximately 30 minutes to install with very few tools required.

Push Button Replacements

Handle Wire with Connector - 153-8424
Handle Wire without Connector - 153-8424A
Push Button with Soldered Leads - 153-8424B
Handle Wire with Kill Plugs - 153-8424C
Handle Wire for ION/K+ - 154-8824



Spray Pressure Regulator Upgrade - 154-8268

Proximity Upgrades

| | | |
|-----------------|------------------|----------|
| Tach (Internal) | PXS-A,B | 154-8289 |
| Tach (External) | PXS-A,B, STD, KK | 154-8290 |
| LDS (Right) | PXS-A,B | 154-8291 |
| LDS (Center) | PXS-A,B | 154-8292 |
| LDS (Center) | KK STD | 154-8672 |
| Head Timing | STD PXS-A,B | 154-8673 |

Replacement Felt

Felt (1/8" x 3") - 154-02285
Sold by the inch.

KOSI PRO Software - Version 7.0!

For All Sanction Technology Lane Machines! Quick and Easy to Use.

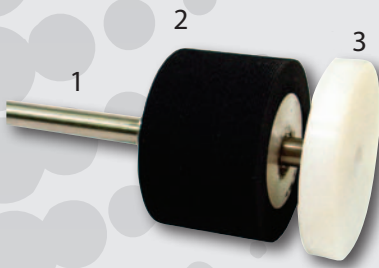
KOSI PRO & CABLE (v7.x) - 154-8771
KOSI PRO, CONVERTER & CABLE (v7.x) - 154-8771A
KOSI PRO UPDATE (v7.x) - 154-8771U
KOSI PRO UPGRADE (5.x/6.x to v7.x) - 154-8771C

Data Cables

KOSI USB to Serial Port Cable - 154-8727
KOSI Serial to Serial Port Cable - 154-8724
RS232 Converter Module for KOSI Cable (for Omron C200HG & C200HS) - 154-1614
USB to Serial Port Converter & KOSI Cable (for 64 bit OS) - 154-8721B

miscellaneous

LDS Shaft Assembly



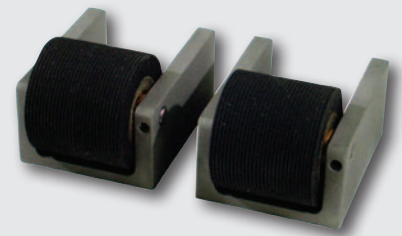
1. Shaft - See Operators Manual
2. Wheel - 153-7002AA
3. Kick Up Wheel - 153-7401

Transport Wheels



- Lane to Lane Caster 2" 153-0812 (*Heavy Duty*)
- Transport Caster 3" Dual Wheel - 153-0001
- 2" Single Wheel - 153-0002

Momentary Wheel Assembly



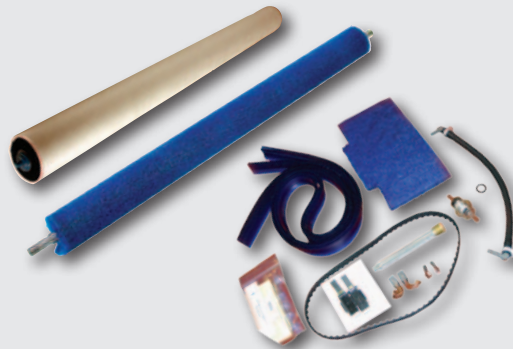
- Wheel - 153-7005R
- Shaft - 153-6006
- Housing - 153-6029

Guide Rollers



- Guide Roller - 153-8410
- Not used on LW | LCM | ION-D | KW-D

- Guide Roller - 153-8310 - LW | LCM
- Guide Roller Shoulder Bolt - 153-2407
- Guide Roller Mounting Bar - 153-6417
- Guide Roller Spring - 153-2401
- SHCS 1/4-20 x 2-3/4 - 153-2211



Tune Up Kits

- PX-B (115V) - 153-8888
- PXS-A,B (115V) - 154-8288
- KP | EP (115V) - 154-8686
- KP | EP (230V) - 154-8687
- STD (115V) - 154-8688
- KK | ELT | PX-C | PXS-C (115V) - 154-8888
- ION - 158-8428
- KW - 158-8628

Spare Parts Kit



Call for Availability



- Walker Whisker Spring - 153-2946
- Black Vinyl Cap - 153-2941

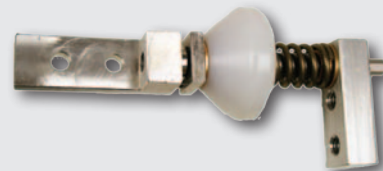
Lid Components



- Push Latch with Key - 154-0881
- Flush Mount Lid Latch (*without lock*) - 153-2232A
- Flush Mount Lid Latch (*with lock*) - 153-2232L
- Middle Slide Latch - 154-0005
- Straight Quarter Turn Lid Latch (*with slot*) - 154-0804
- Flange Quarter Turn Lid Latch (*with slot*) - 154-0805
- Bent Catch Quarter Turn Lid Latch (*with slot*) - 154-0819
- Rubber Bumper - 154-0006A
- Foam (*sold by inch*) - 153-0036

New Adjustable Guide Rollers

Introduced on the Model D ION and Model D Walker



- Complete Front Assembly - 158-8643
- Front Wheel Only - 158-8637
- Complete Rear Assembly - 158-8642
- Rear Wheel Only - 158-8636

fittings



Elbow
1/4 Tube x 1/4 Tube - 154-0243



Elbow
3/8 x 3/8 - 154-0256



Elbows
3/8 NPT x 1/4 Tube - 154-0412
3/8 NPT x 3/8 Tube - 154-0803



Elbows
3/8 Tube x 1/4 NPT - 154-0225
1/4 Tube x 1/4 NPT - 154-0223



Elbow
1/4 Stem x 1/4 Hose Barb
154-0226



Elbow
1/4 Stem to 5/16 Hose Barb
154-0227



Elbow
3/8 Stem to 5/16 Hose Barb
154-0239



Elbows
3/8 Stem x 3/8 Tube - 154-0258
3/8 Stem x 1/4 Tube - 158-1214



Elbow
1/4 Stem x 1/4 Tube - 154-0222



Elbow
1/8 NPT x 3/16 Tube - 154-0613



Male Swivel Elbow
1/4 Tube x 1/4 NPT - 153-0818



Compression Fitting
1/4 x 3/8 MPT - 153-0212



Reducing Union
1/4 x 3/16 - 154-0248



Bulkhead Union
3/8 x 3/8 - 154-0285



Union
1/4 x 1/4 154-0241



Union Tee
1/4 Tube - 153-0815



Reducing Union
3/8 to 1/4 - 154-0244



Male Connector
1/4 Tube x 1/8 NPT - 154-0224



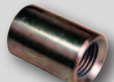
Female Connector
1/4 Tube x 1/8 FPT - 154-0257



Union Tee
3/8 Tube - 154-0815



Male Connectors
1/2 Tube x 1/2 NPT (Drilled)
154-0232D



In-line Coupler
1/8 - 154-0230



Stem Adapter
1/4 NPT x 1/4 Stem - 154-0243S



Male Luer
1/8" Hose Barb - 154-0863

1/4 x 1/4 MPT - 153-0209



Tank Plug
1/4" - 154-0245
3/8" - 153-1054
1/2" - 154-0231



O-Rings for Fittings
1/4" - 154-0287A
3/8" - 154-0287B
1/2" - 154-0287C



Oil Fill Stem - PX8
3/8 x 3/8 - 153-1055

Tubing Stock Chart

All Tubing Sold By The Inch
Cleaning

1/4" - 153-0208S

#24 Norprene® - 154-0861

Conditioning


3/16" - 154-0202B

1/4" - 154-0202A


3/8" - 154-0202

3/8" Viton® - 154-0201A



HEX HEAD CAP SCREWS

| | | 1/4 | | 5/16 | | 3/8 | |
|---|----------|------|----------|--------|----------|-----|--|
|  | | | | | | | |
| 7/8" | 153-2052 | 1" | 153-2061 | 1" | 153-2066 | | |
| 1" | 153-2053 | 1/4" | 153-2062 | 1 1/4" | 153-2067 | | |
| 1 1/4" | 153-2054 | | | 1 1/2" | 153-5068 | | |
| 1 1/2" | 153-2055 | | | 2" | 153-2069 | | |







MACHINE SCREWS PHILLIPS

| | | # 6 | | # 8 | | # 10 | |
|---|----------|--------|-----------|------|----------|------|--|
|  | | | | | | | |
| 1/2" | 153-2081 | 5/8" | 153-2086 | 3/4" | 153-2091 | | |
| 7/8" | 153-2083 | 3/8" | 153-2086A | 1" | 153-2092 | | |
| 1" | 153-2084 | 3/4" | 153-2087 | | | | |
| 1 1/4" | 153-2085 | 1" | 153-2089 | | | | |
| | | 1 1/2" | 153-2090 | | | | |

HEX NUTS

| | | STANDARD | NYLOK | JAM |
|---|------|----------|----------|---|
|  | #6 | | 153-2018 | |
|  | #8 | | 153-2019 | |
|  | #10 | 153-2022 | 153-2208 | 153-2524 |
|  | 1/4 | 153-2023 | 153-2020 | 153-2304 |
|  | 5/16 | 153-2024 | 153-2735 | 5/16-18 153-2027A 5/16-24 153-2214 |
|  | 3/8 | 153-2025 | 153-2021 | 153-2027 |
|  | 1/2 | 153-2026 | | |

WASHERS

| | | FLAT | LOCK |
|--|------|----------|----------|
|  | #6 | 153-2001 | |
|  | #8 | 153-2002 | |
|  | #10 | 153-2003 | 153-2013 |
|  | 1/4 | 153-2004 | 153-2014 |
|  | 5/16 | 153-2005 | 153-2015 |
|  | 3/8 | 153-2006 | 153-2016 |

MOLEX PLUGS



| CONNECTOR | MALE | FEMALE |
|------------------|-----------|----------|
| 2 PIN | 153-1041 | 153-1042 |
| 3 PIN | 153-1044 | 157-1043 |
| 5 PIN | 158-1206 | 158-1207 |
| 6 PIN | 154-1231 | 154-1232 |
| 9 PIN | 153-1039A | 153-1040 |
| 12 PIN | 153-1602A | 153-1603 |
| 15 PIN | 154-1807 | 154-1808 |
| PINS | 153-1045 | 153-1046 |
| Pin Removal Tool | | 153-4002 |

WIRE CLAMPS

| | |
|-----|-----------|
| 1/8 | 153-1049D |
| 1/4 | 153-1049A |
| 3/8 | 153-1049E |
| 1/2 | 153-1049B |
| 3/4 | 153-1049C |



motors & speed controls

| | PXS MODEL A/B | PXS MODEL C STANDARD AC | KUSTODIAN & KUSTODIAN PLUS | KUSTODIAN ION MODEL A/B | KUSTODIAN WALKER MODEL A/B | STANDARD SE / ELITE / ELITE PLUS |
|--|------------------|------------------------------------|-------------------------------------|-------------------------------|----------------------------------|--|
| Blower Motor (115VAC) | 153-8801 | N/A | N/A | N/A | N/A | N/A |
| Blower Motor (230VAC) | 153-8802 | N/A | N/A | N/A | N/A | N/A |
| Buffer Motor (115VAC) | 153-8016A | 154-8616A | 154-8616A | N/A | N/A | 154-8616B |
| Buffer Motor (230VAC) | 153-8616 | 154-8616E | 154-8616E | N/A | N/A | 154-8616E |
| Buffer Motor (24VDC) | N/A | N/A | N/A | 158-8414 | 158-8414 | N/A |
| Buffer Motor Brushes | | | | 158-1406B | 158-1406B | |
| Buffer Motor Contactor (115VAC) | 153-1004 | 153-1004A | 153-1004A | N/A | N/A | 153-1004A |
| Buffer Motor Contactor (230VAC) | 153-1604 | 153-1604A | 153-1604A | N/A | N/A | 153-1604A |
| Circuit Board w/Speed Relays (115VAC) | 154-8210 | 154-8312 | 154-8810 | N/A | N/A | N/A |
| Circuit Board w/Speed Relays (230VAC) | 154-8210 | 154-8644 | 154-8811 | N/A | N/A | N/A |
| Circuit Board w/Speed Relays (24VDC) | N/A | N/A | N/A | 158-8409 | 158-8409 | N/A |
| Conditioner Pump Motor (115VAC) | 154-8234 | 154-8604 | 154-8604 | N/A | N/A | 154-8604 |
| Conditioner Pump Motor (230VAC) | 154-8234 | 154-8604E | 154-8604E | N/A | N/A | 154-8604E |
| Conditioner Pump Motor (24VDC) | N/A | N/A | N/A | 158-8401 | 158-8401 | N/A |
| Conditioner Pump Motor Brushes (24VDC) | N/A | N/A | N/A | 158-1422B | 158-1422B | N/A |
| Drive Motor (90VDC) | 153-8065 | 153-8065 - STD 154-8365 - PXS-C | 154-8865 | N/A | N/A | 153-8065 - STD 154-8365 - ELT EP |
| Drive Motor Brushes (90VDC Pair) | 153-1057H | 153-8065 | 154-1809B | N/A | N/A | 154-1809B |
| Drive Motor (24VDC) | N/A | N/A | N/A | 158-8406 | 158-8602 | N/A |
| Drive Motor Brushes (24VDC Pair) | N/A | N/A | N/A | 158-1405B | 158-1405B | N/A |
| Duster Motor (115VAC) | 153-8403 | 153-8403 | 153-8403 | N/A | N/A | 153-8403 |
| Duster Motor (230VAC) | 153-8803H | 153-8803H | 153-8803H | N/A | N/A | 153-8803H |
| Duster Motor (24VDC) | N/A | N/A | N/A | 158-8403 | 158-8403 | N/A |
| Head Drive Motor (115VAC) | 154-8232 | 154-8232 | 154-8232 | N/A | N/A | 154-8232 |
| Head Drive Motor (230VAC) | 154-8232 | 154-8632 | 154-8632 | N/A | N/A | 154-8632 |
| Head Drive Motor (24VDC) | N/A | N/A | N/A | 158-8405 | 158-8405 | N/A |
| Isolator Analog Card 115VAC Drive Assembly | N/A | N/A | N/A | N/A | N/A | 154-8633 |
| Isolator Analog Card 230VAC Drive Assembly | N/A | N/A | N/A | N/A | N/A | 154-8634 |
| Isolator Analog Card 115VAC Buffer Assembly | N/A | N/A | N/A | N/A | N/A | 154-8635 |
| Isolator Analog Card 230VAC Buffer Assembly | N/A | N/A | N/A | N/A | N/A | 154-8636 |
| Isolator Analog Card Only | N/A | N/A | N/A | N/A | N/A | 154-1413 |
| Speed Control Assembly (24VDC-Drive) | N/A | N/A | N/A | 158-8412 | 158-8412 | N/A |
| Speed Control Assembly (24VDC-Cleaner Pump) | N/A | N/A | 154-8848 | 158-8415 | 158-8415 | N/A |
| Speed Control Board Only (115VAC) | 153-1012 | 153-1012 | 153-1012 | N/A | N/A | 153-1012 |
| Speed Control Board Only (230VAC) | 153-1812 | 153-1812 | 153-1812 | N/A | N/A | 153-1812 |
| Speed Control Board Only (24VDC) | N/A | N/A | N/A | 158-1410 | 158-1410 | N/A |
| Squeegee & Brush Lift Motor (115VAC) | 153-8207 | 153-8207 | 153-8207 | N/A | N/A | 153-8207 |
| Squeegee & Brush Lift Motor (230VAC) | 153-8807H | 153-8807H | 153-8807H | N/A | N/A | 153-8807H |
| Squeegee & Brush Lift Motor (24VDC) | N/A | N/A | N/A | 158-8402 | 158-8402 | N/A |
| *Transfer Roller Motor (115VAC) | 154-8206 | 154-8206 | 154-8206* | N/A | N/A | 154-8206* |
| *Transfer Roller Motor (230VAC) | 154-8206A | 154-8206A | 154-8206A* | N/A | N/A | 154-8206A* |
| Vacuum Motor (115VAC) | 153-8205 | 154-8805 | 154-8805 | N/A | N/A | 154-8805 |
| Vacuum Motor Brushes (115VAC Pair) | 153-0204B | 153-0204B | 153-0204B | N/A | N/A | 153-0204B |
| Vacuum Motor (230VAC) | 153-8805 | 154-8805E | 154-8805E | N/A | N/A | 154-8805E |
| Vacuum Motor Brushes (230VAC Pair) | 153-0204C | 153-0204C | 153-0204C | N/A | N/A | 153-0204C |
| Vacuum Motor (24VDC) | N/A | N/A | N/A | 158-8407 | 158-8407 | N/A |
| Vacuum Brushes (24VDC) | N/A | N/A | N/A | 158-1421B | 158-1421B | N/A |

* Not used on Kustodian PLUS or Elite PLUS

| COMPONENTS | PX MODEL A/B | PX MODEL C | CROSSFIRE |
|---|--------------|------------|-----------|
| Blower Motor (115VAC) | 153-8801 | N/A | N/A |
| Blower Motor (230VAC) | 153-8802 | N/A | N/A |
| Buffer Motor (115VAC) | 153-8016A | 154-8616A | 154-8616A |
| Buffer Motor (230VAC) | 153-8616 | 154-8616E | 154-8616E |
| Buffer Motor Contactor (115VAC) | 153-1004 | 153-1004A | 153-1004A |
| Buffer Motor Contactor (230VAC) | 153-1604 | 153-1604A | 153-1604A |
| Circuit Board w/Speed Relays (115VAC) | N/A | 154-8330 | N/A |
| Circuit Board w/Speed Relays (230VAC) | N/A | 154-8331 | N/A |
| Drive Motor (90VDC) | 153-8065 | 154-8865 | 154-8865 |
| Drive Motor Brushes (90VDC Pair) | 153-1057H | 154-1809B | 154-1809B |
| Duster Motor (115VAC) | 153-8403 | 153-8403 | 153-8403 |
| Duster Motor (230VAC) | 153-8803H | 153-8803H | 153-8803 |
| Speed Control Assembly (115VAC 3-Speed) | 153-8822 | N/A | N/A |
| Speed Control Assembly (230VAC 3-Speed) | 153-8823 | N/A | N/A |
| Speed Control Assembly (115VAC 4 Speed) | 153-8842 | N/A | N/A |
| Speed Control Assembly (230VAC 4 Speed) | 153-8843 | N/A | N/A |
| Speed Control Assembly (115/230VAC 3-Speed) | N/A | N/A | 158-8211 |
| Speed Control Board Only (115VAC) | 153-1012 | 153-1012 | 158-1212 |
| Speed Control Board Only (230VAC) | 153-1812 | 153-1812 | 158-1212 |
| Squeegee & Brush Lift Motor (115VAC) | 153-8207 | 153-8207 | 153-8207 |
| Squeegee & Brush Lift Motor (230VAC) | 153-8807H | 153-8807H | 153-8807 |
| Transfer Roller Motor (115VAC) | 153-8828 | 154-8332 | 153-8828 |
| Transfer Roller Motor (230VAC) | 153-8829 | 154-8332E | 153-8829 |
| Vacuum Motor (115VAC) | 153-8205 | 154-8805 | 158-8208 |
| Vacuum Motor Brushes (115VAC Pair) | 153-0204B | 153-0204B | 153-0204B |
| Vacuum Motor (230VAC) | 153-8805 | 154-8805E | 158-8208E |
| Vacuum Motor Brushes (230VAC Pair) | 153-0204C | 153-0204C | 153-0204C |

| |
|---|
| For Dayton® Drive Motor - 153-8065 |
| Rear Seal - 153-1057R |
| Gasket - 153-1057F |
| Front Seal - 153-1057S |

| |
|---|
| For Baldor® Drive Motor - 154-8865 |
| Drive End Seal - 154-1809D |
| Housing End Seal - 154-1809E |



Now one person can quickly and easily raise and lower their lane machine safely.

Physical Properties:

- * Color - Black (Custom colors are available by calling Kegel)
- * Dimensions: Width: 60" | Height: 8" | Depth: 8"
- * Lifting Capacity: Any Lane Machine (when mounted properly)
- * Packaging: Assembled and ready to mount

Part Number: 154-8510

Must be installed by a qualified contractor.

lane machine assist



KEGEL

products & parts | 09-10

Toll Free (US Only): 1 - 800 - 280 - BOWL (2695)
Fax: 1 - 863 - 734 - 0203
International: +1 - 863 - 734 - 0200

1951 Longleaf Blvd.
Lake Wales, FL 33859 USA

www.kegel.net