

2008 PRODUCT CATALOG



3G A DIVISION OF 900 GLOBAL



900 Global LLC.
San Antonio, Texas
(800) 424-2695

www.900global.com



COMFORT, QUALITY, & PERFORMANCE

INNOVATIVE MOTION

Tour Ultra



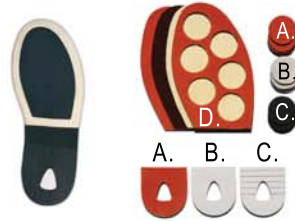
S3002 & SL3002
(Right & Left Handed)

Tour Ultra models include:

- Kangaroo leather upper
- Kevalar® Rubber Traction sole
- DuPont™ Kevlar® Rubber Toe Cap (Replaceable)
- 3 Interchangeable soles & 1 cleat sole
- 3 Interchangeable heels
- Men's 6-12, 13 D width



S3003



Soles

- A. Backskin
- B. Oiled Leather
- C. Deerskin
- D. Cleated sole

Cleats

- A. Backskin
- B. Teflon
- C. Felt



S3004

Tour Ultra series shoes are made of kangaroo leather. This leather has proven to be stronger, yet more flexible than other leathers.



Accessories
Carry bag, shoe cover, shoe keepers

Sport Deluxe

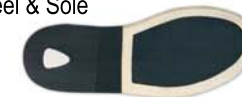


S950-04 & SL950-04
(Right & Left Handed)



S950-05

Interchangeable Heel & Sole



The **Sport Deluxe** shoes provide an introduction to interchangeable sole and heel technology at an affordable price.

Sport Deluxe models include:

- Black or Blue/Black Synthetic Leather Uppers
- Hardened Rubber Toe Cap and Traction Sole
- 2 Interchangeable Soles
- 1 Flat normal heel
- Vented Inner Soles
- Men's 6-12, 13, D Width



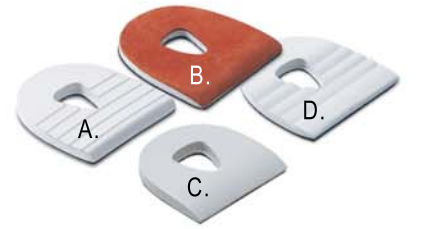
Soles

- A. Synthetic Leather
- B. Deerskin Leather

High Performance Options



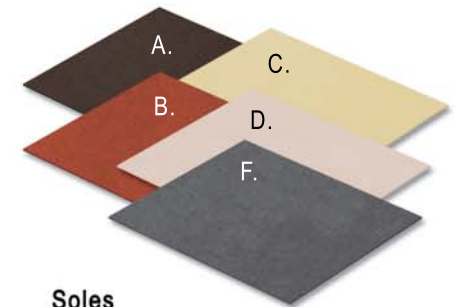
Replacement Toe Caps Available in cream or grey
*Note: Only Tour Ultra & The Shuffler have replaceable toe caps



Replacement heels from left to right A. Grooved, B. Deerskin, C. Flat smooth and D. Rippled heel

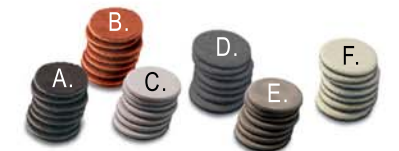


Adjust-A-Heel
Fine tune your slide



Soles

- A. Oiled leather, B. Backskin, C. Deerskin, D. Chrome, and F. Felt (grey or black)



Cleats

- A-Oiled leather, B-Backskin, C-Chrome, D-Felt, E-Teflon, & F-Deerskin

The "Shuffler"



S1700-01 & SL1700-01
(Right & Left Handed)

New Color
Black /Silver

The **Shuffler** shoe is made from high grade cow leather. Designed for bowlers that like to shuffle their feet.



Smooth Rubber Bottom

The **Shuffler** model includes:

- Hand tooled leather uppers
- Smooth Rubber Low Traction Push Off Sole
- Replaceable Gray DuPont Kevlar Rubber Toe Cap
- 3 Interchangeable Soles and Heels
- Men's 7-12, 13, D Width



Soles

- A. Backskin
- B. Oiled Leather
- C. Deerskin



Heels

- A. Backskin
- B. Flat Normal
- C. Grooved

Sport Ultra



S1500-04 & SL1500-04
(Right & Left Handed)

Sport Ultra shoes are made with Cowhide Leather and the same attention to detail as the Tour Ultra shoes. The Sport Ultra has 3 interchangeable soles and 3 heels, making these shoes versatile as well as comfortable.



S1500-05

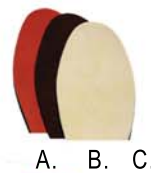
The **Sport Ultra** models include:

- Black/Burgundy, Black/Pewter, & Black/Metallic Blue Hand Tooled Leather Uppers
- Hardened Rubber Toe Cap and Traction Sole
- 3 Interchangeable Soles and Heels
- New Vented Inner Soles
- Men's 6-12, 13, D Width



New Color
Black/Metallic Blue

S1500-06



Soles

- A. Backskin
- B. Oiled Leather
- C. Deerskin



Heels

- A. Backskin
- B. Flat Normal
- C. Grooved

Sport Classic



S740-05



S740-04 & SL740-04
(Right & Left Handed)

Sport Classic shoes have the tennis shoe look and feel with the added feature of interchangeable soles.

Sport Classic models include:

- Black or White/Purple Synthetic Leather
- Hardened Rubber Toe Cap and Traction Sole
- Vented Inner Soles
- Men's 6-12, 13, D Width
- Women's 5-11, B Width (S740-04 & SL740-04 Only)



Soles

- A. Synthetic Leather